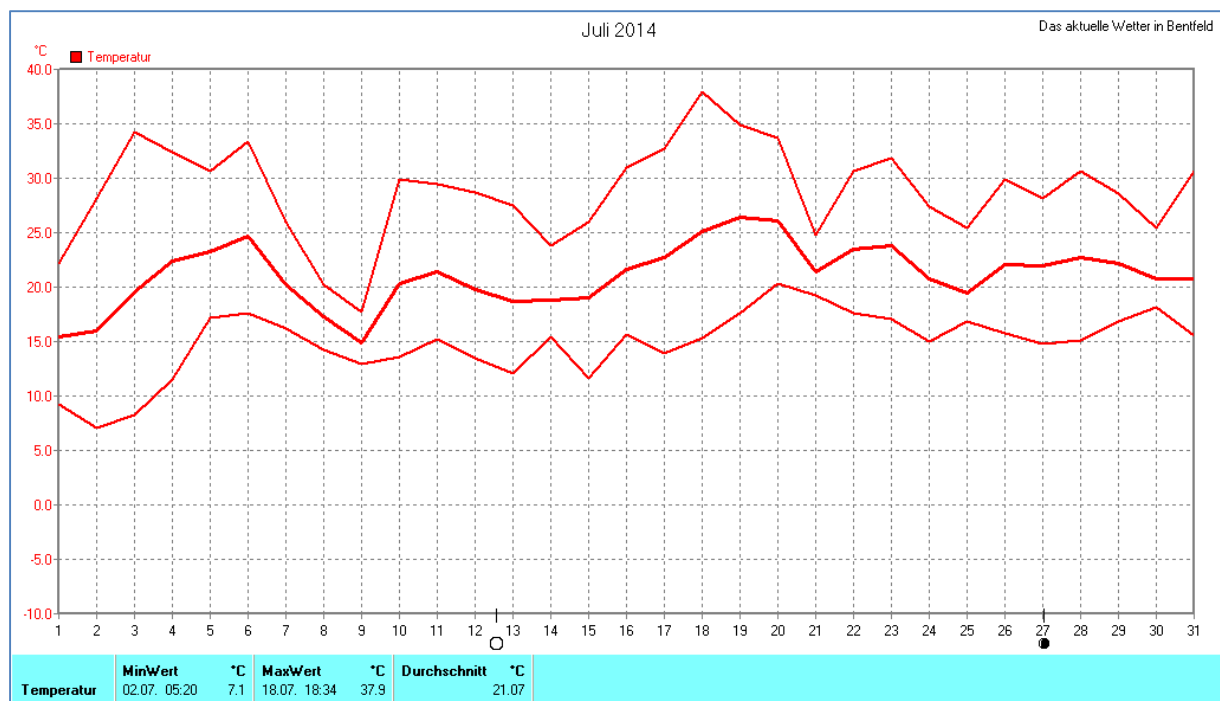
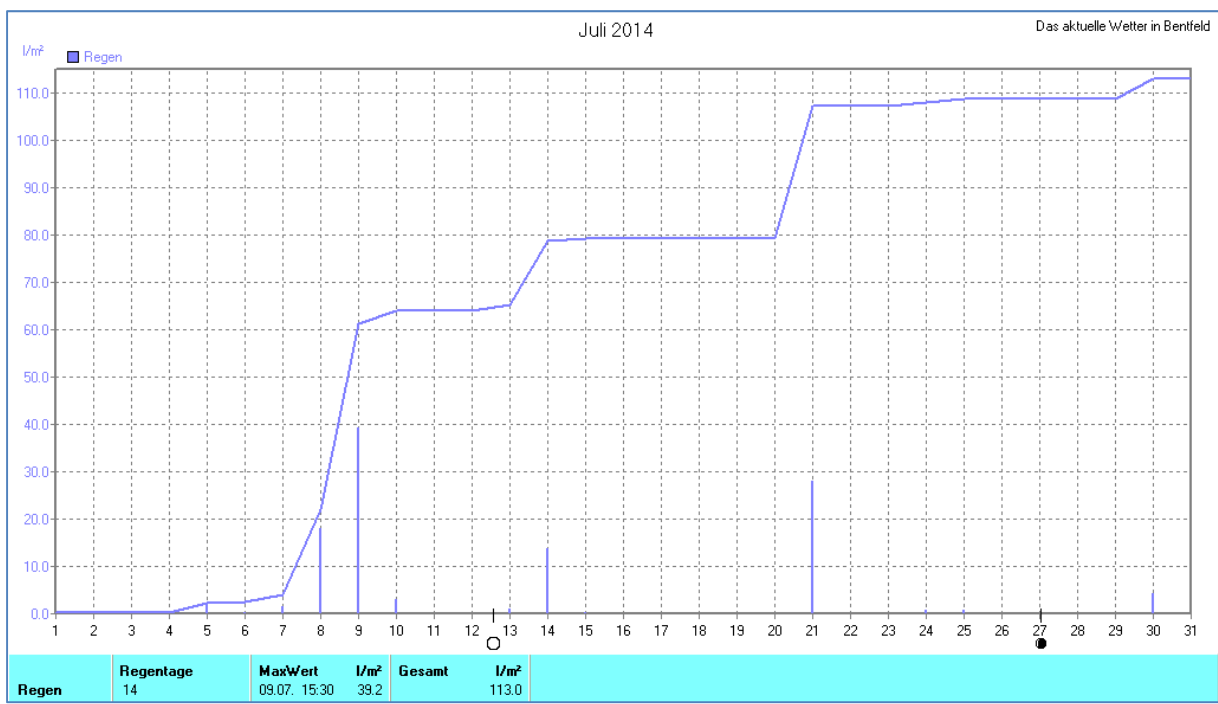
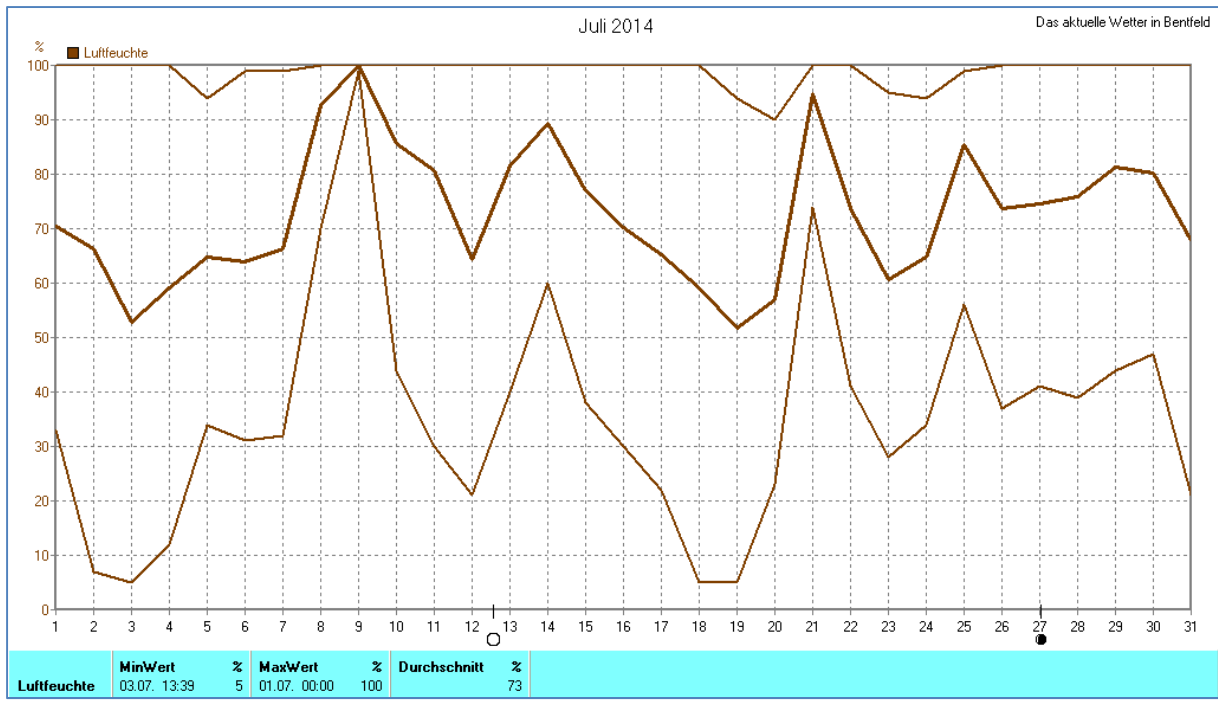
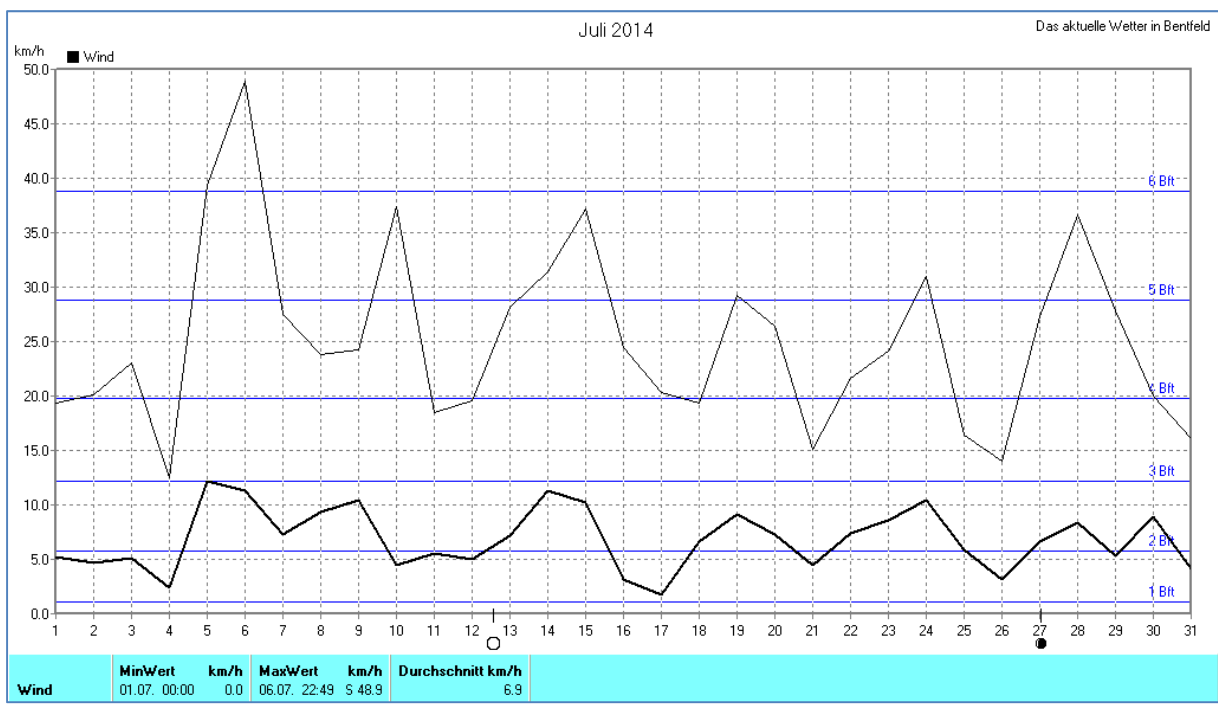
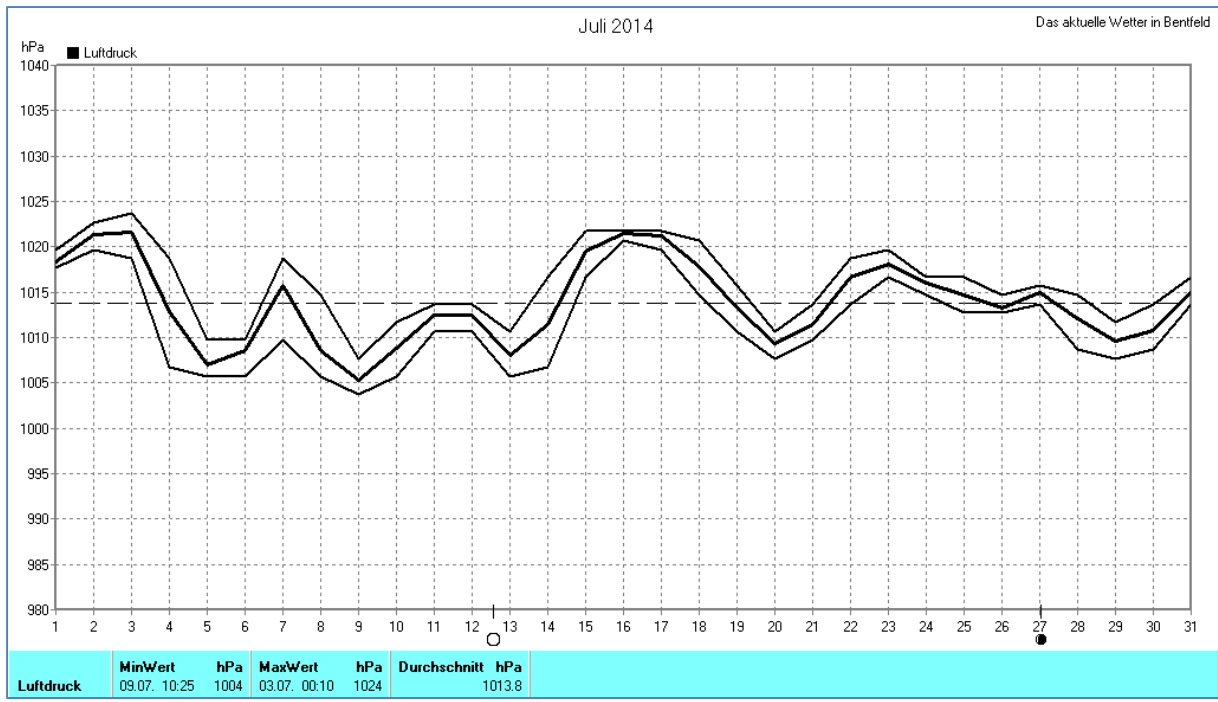


Wettertabelle und Grafiken Juli 2014 Station Bentfeld

Wetterdaten Juli 2014 Station Bentfeld							
Meßgröße	Minimum	Zeit	Datum	Maximum	Zeit	Datum	Durchschnitt
Temperatur (2m)	7,1 °C	05:20	02.07.2014	37,9 °C	18:34	18.07.2014	21,1 °C
Bodentemperatur (5cm)	8,0 °C	05:20	02.07.2014	31,3 °C	15:54	19.07.2014	19,5 °C
Luftfeuchte	5 %	13:39	03.07.2014	100 %	00:00	01.07.2014	73 %
Luftdruck	1004 hPa	10:25	09.07.2014	1024 hPa	00:10	03.07.2014	1014 hPa
Wind km/h				48,9 km/h	22:49	06.07.2014	6,9 km/h
Wind °				S	22:49	06.07.2014	N-NO
Regen l/m²				39,2 l/m²	15:30	09.07.2014	#113,040 l/m²
Sonne h				16:10 h	21:29	04.07.2014	#486:35 h

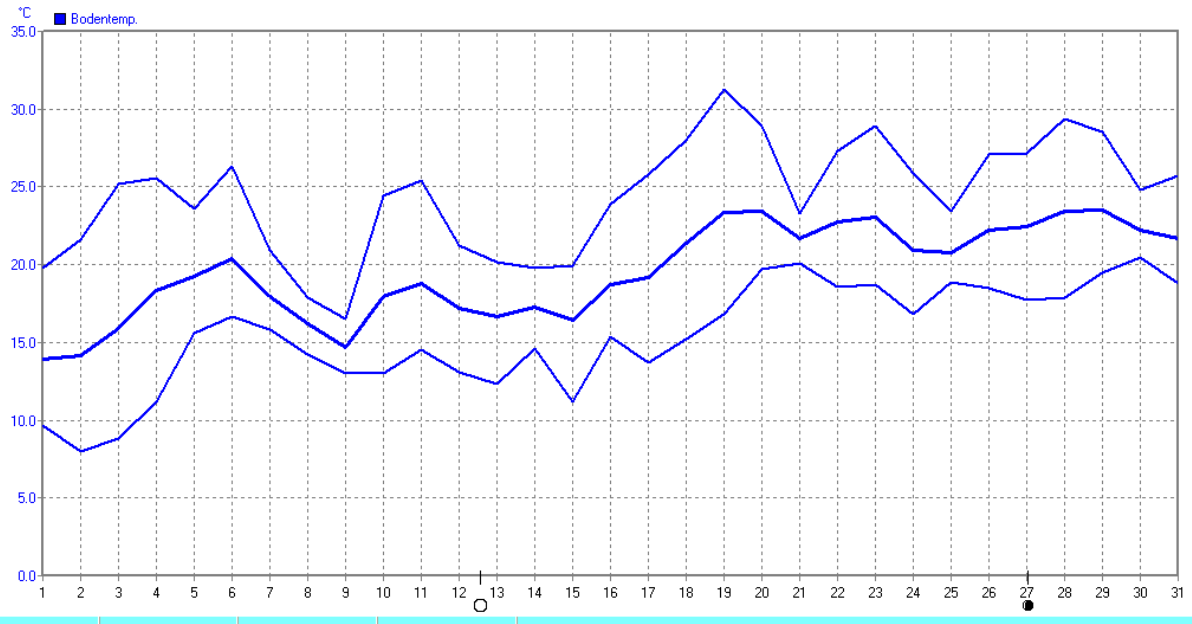






Juli 2014

Das aktuelle Wetter in Bentfeld



Bodentemp.	MinWert	°C	MaxWert	°C	Durchschnitt	°C
	02.07. 05:20	8.0	19.07. 15:54	31.3		19.54