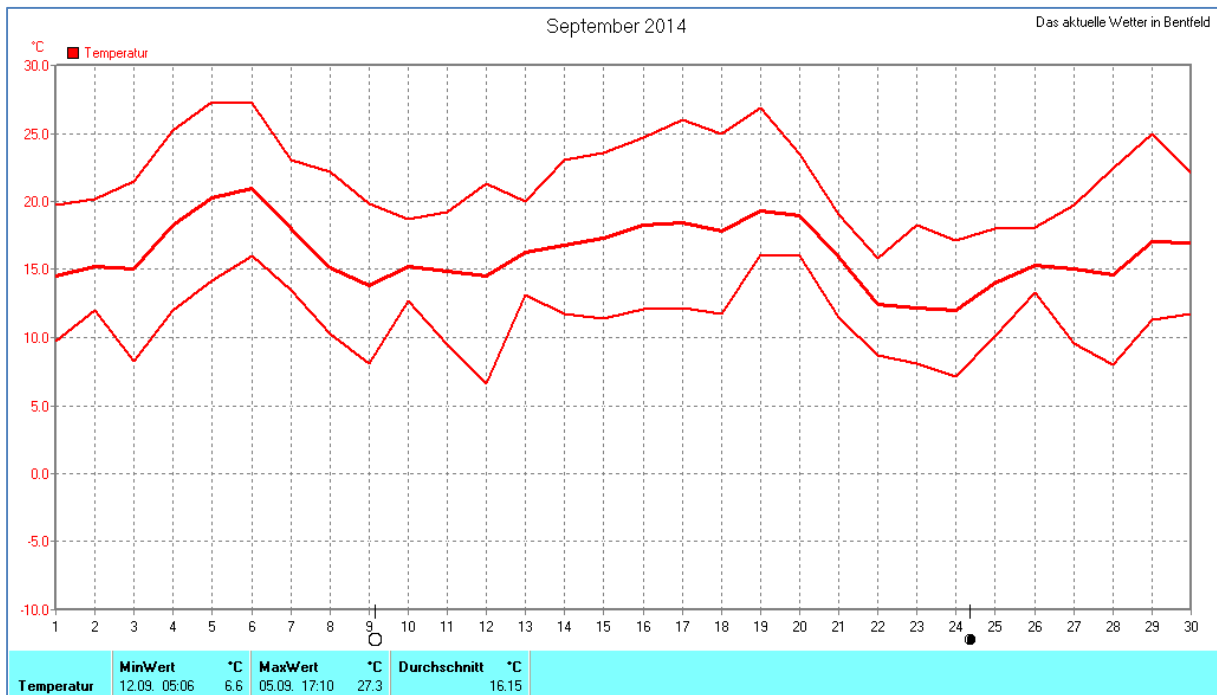
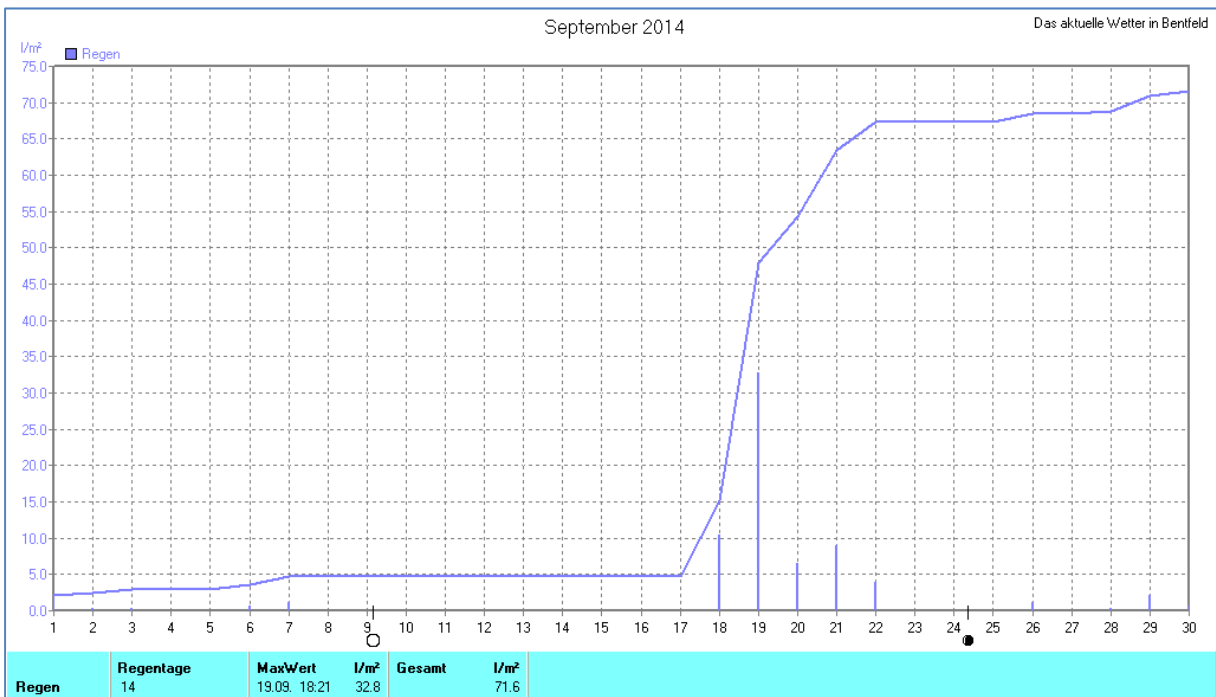
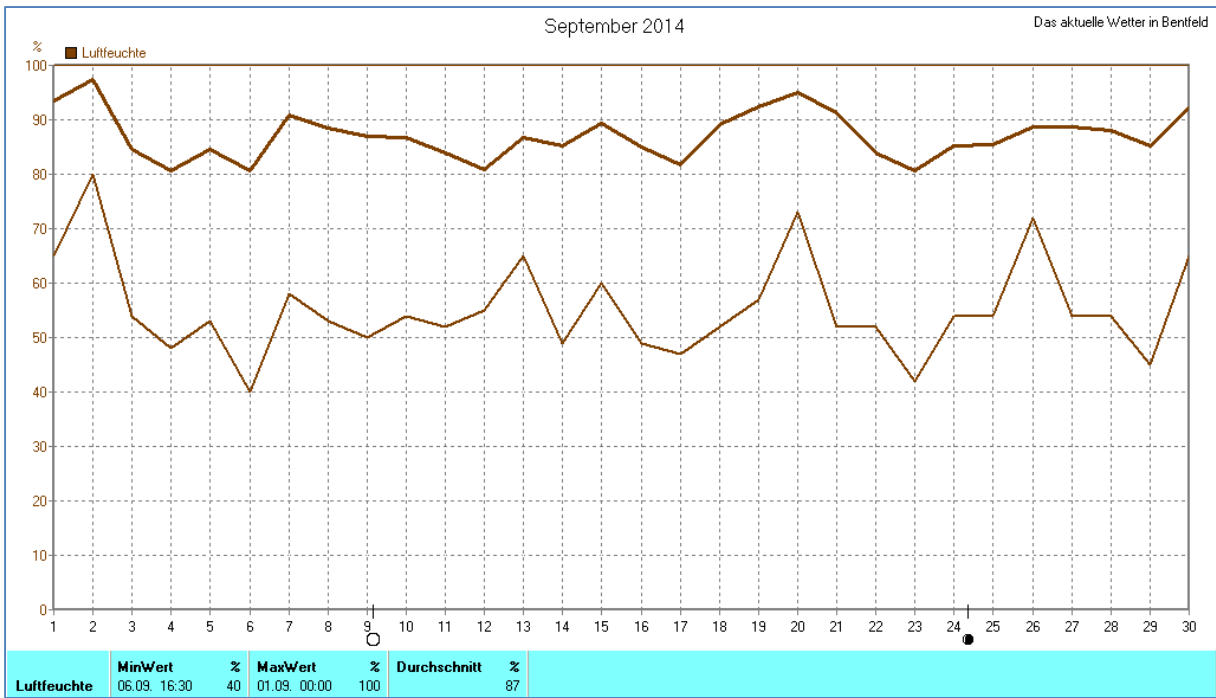
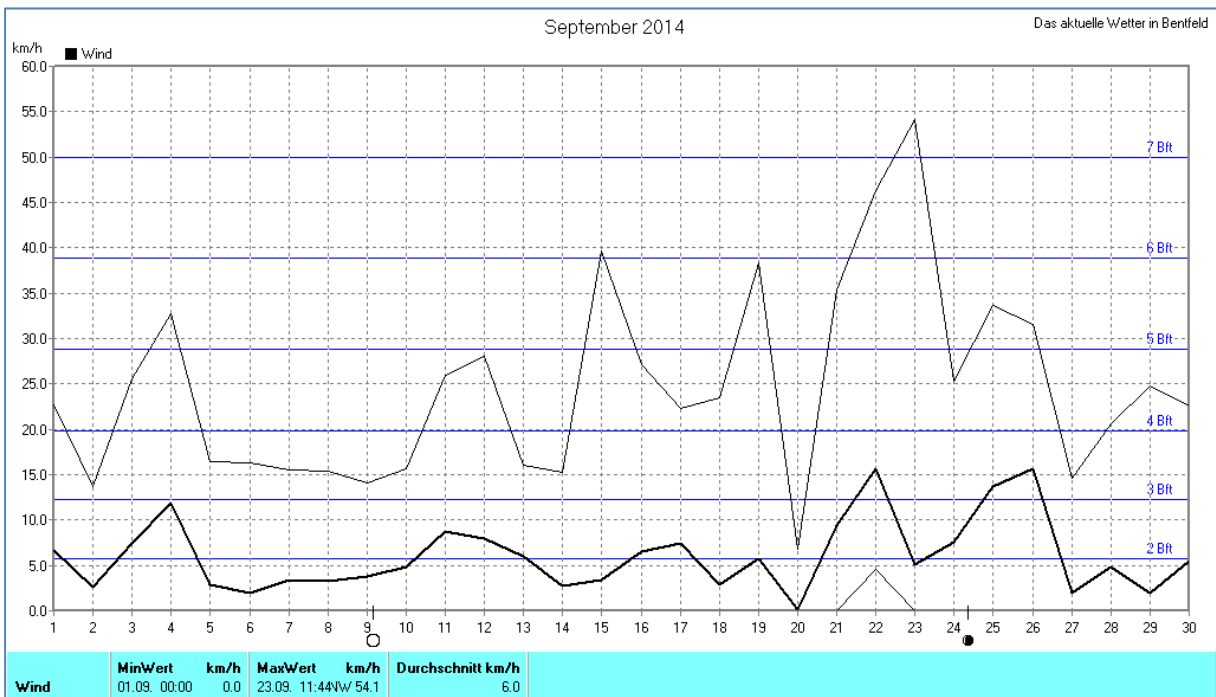
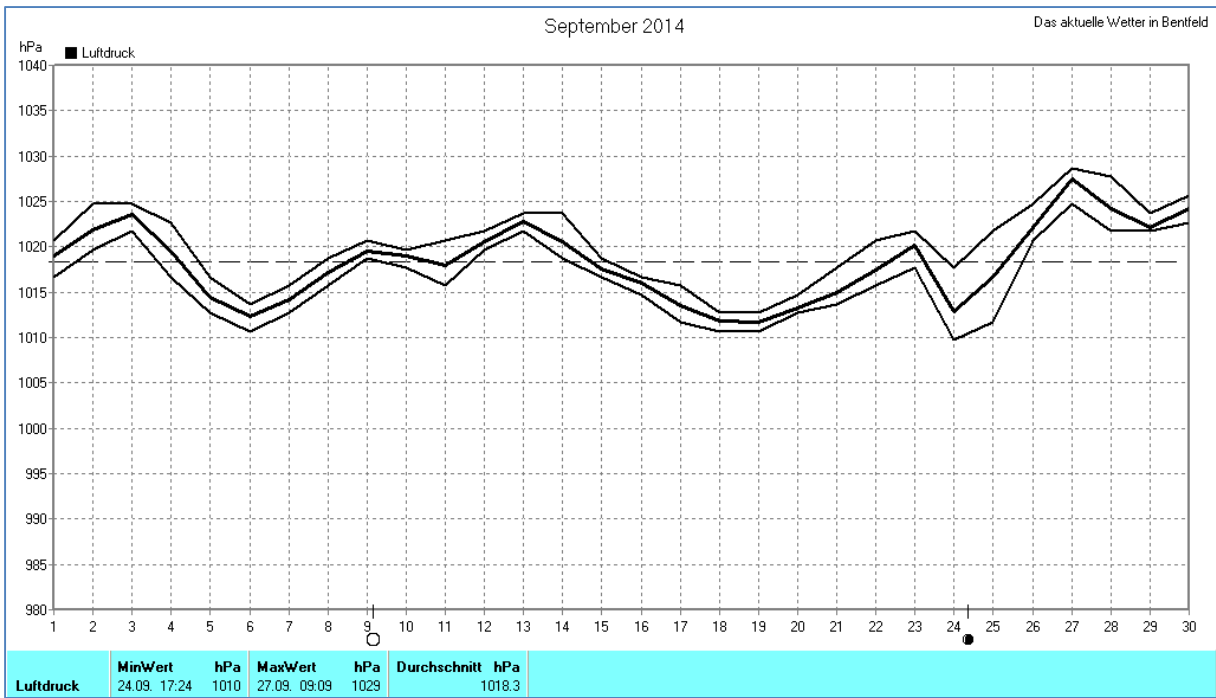


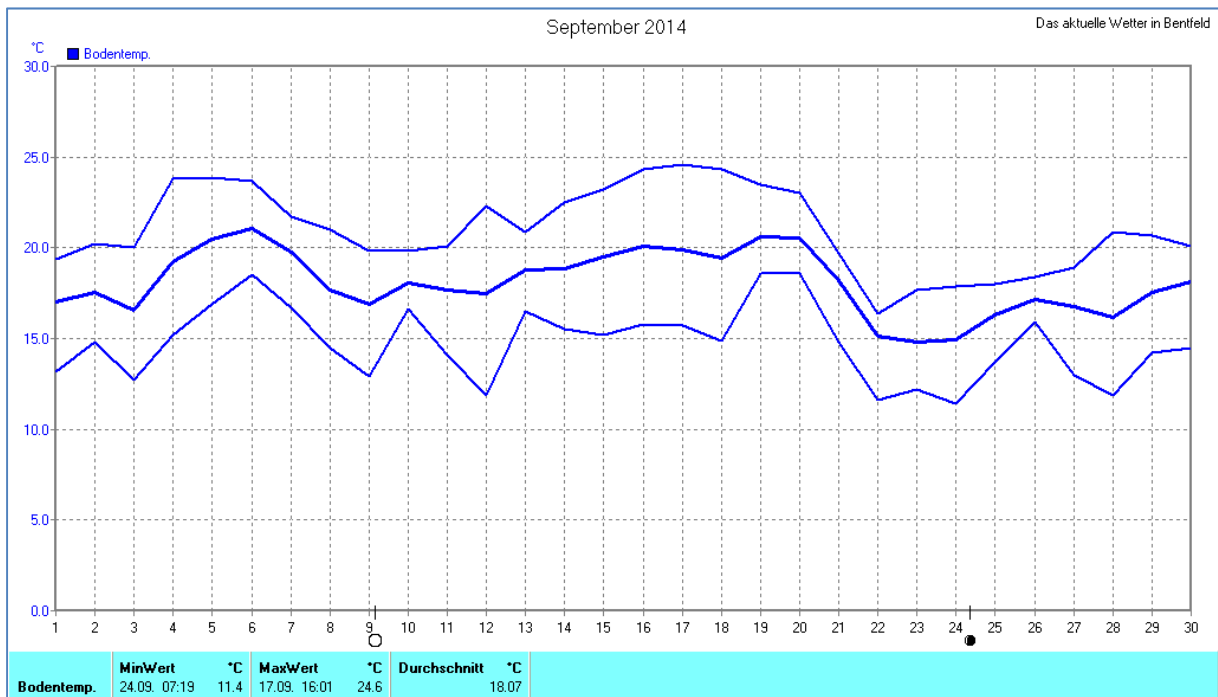
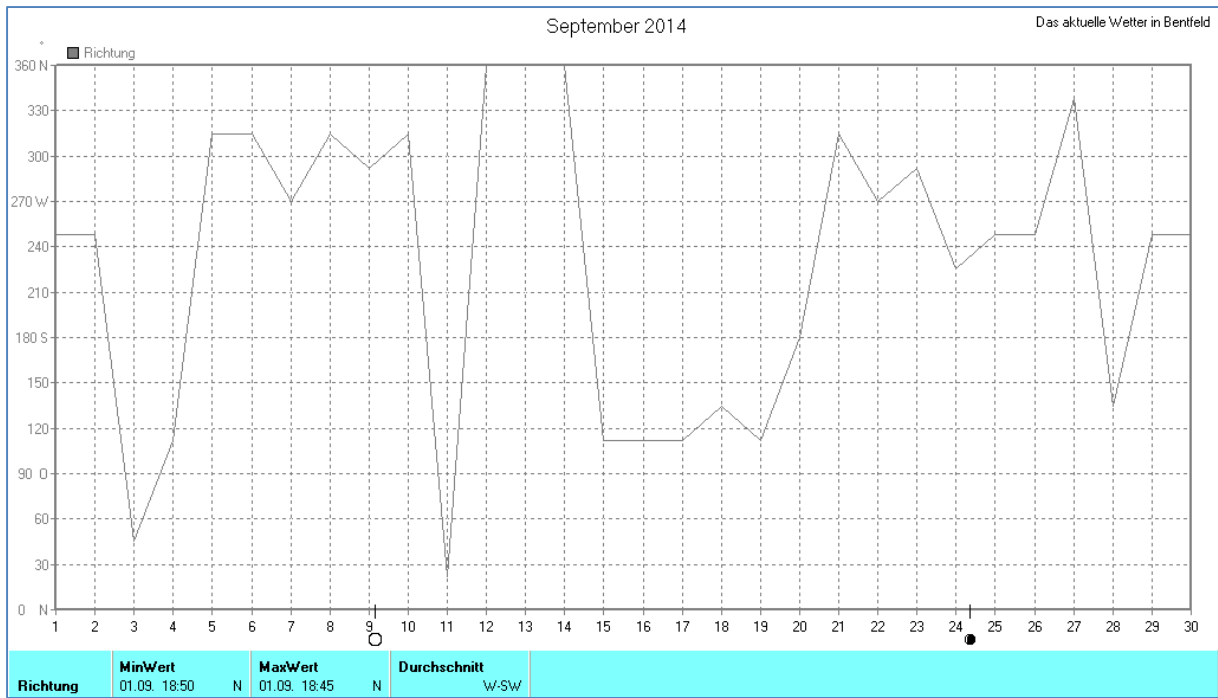
Wettertabelle und Grafiken September 2014 Station Bentfeld

Wetterdaten September 2014 Station Bentfeld							
Meßgröße	Minimum	Zeit	Datum	Maximum	Zeit	Datum	Durchschnitt
Temperatur	6,6 °C	05:06	12.09.2014	27,3 °C	17:10	05.09.2014	16,2 °C
Bodentemp.	11,4 °C	07:19	24.09.2014	24,6 °C	16:01	17.09.2014	18,1 °C
Luftfeuchte	40 %	16:30	06.09.2014	100 %	00:00	01.09.2014	87 %
Luftdruck	1010 hPa	17:24	24.09.2014	1029 hPa	09:09	27.09.2014	1018 hPa
Wind km/h				54,1 km/h	11:44	23.09.2014	6,0 km/h
Wind °				W-NW	11:44	23.09.2014	W-SW
Regen l/m ²				32,8 l/m ²	18:21	19.09.2014	#71,640 l/m ²
Sonne h				9:06 h	17:50	04.09.2014	#123:28 h









September 2014

Das aktuelle Wetter in Bentfeld

