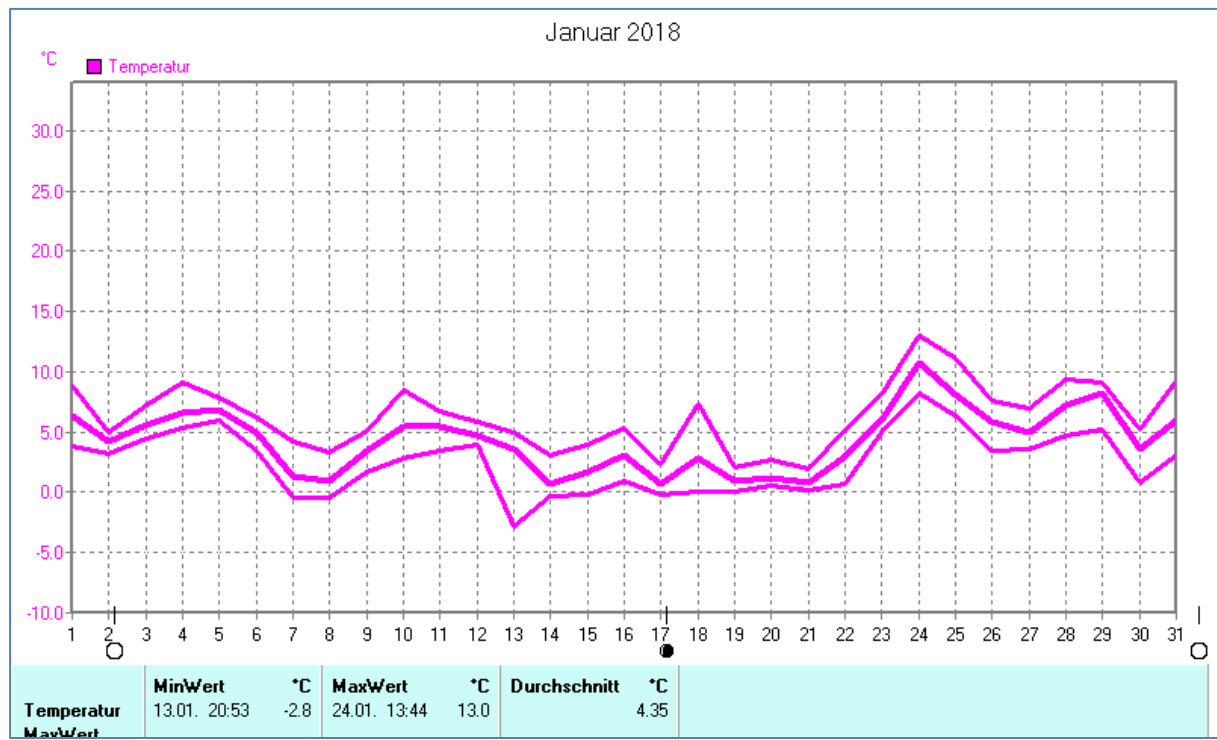
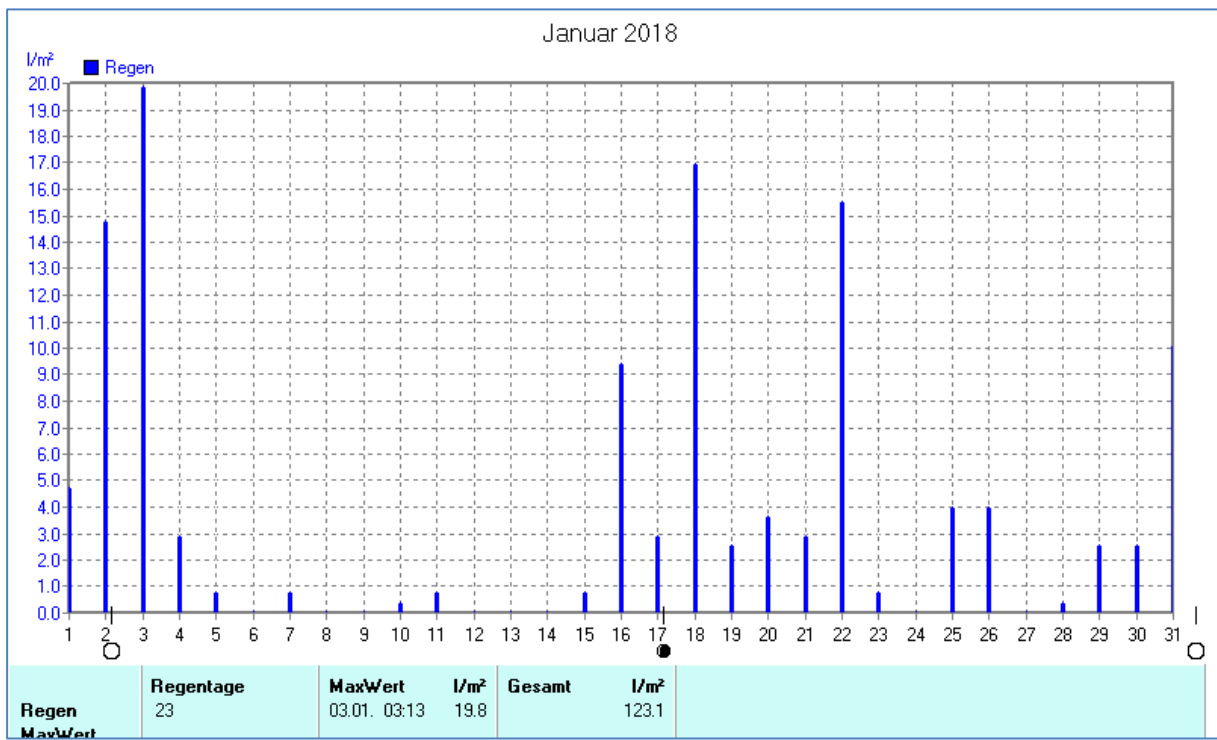
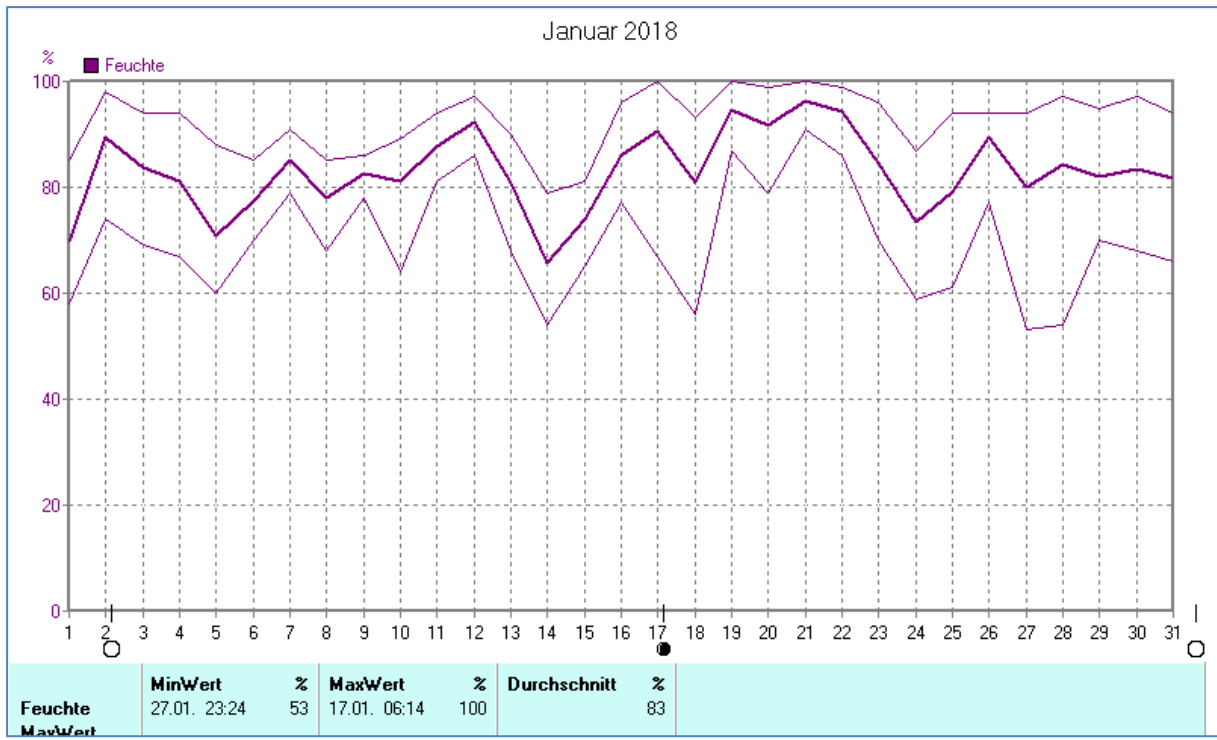
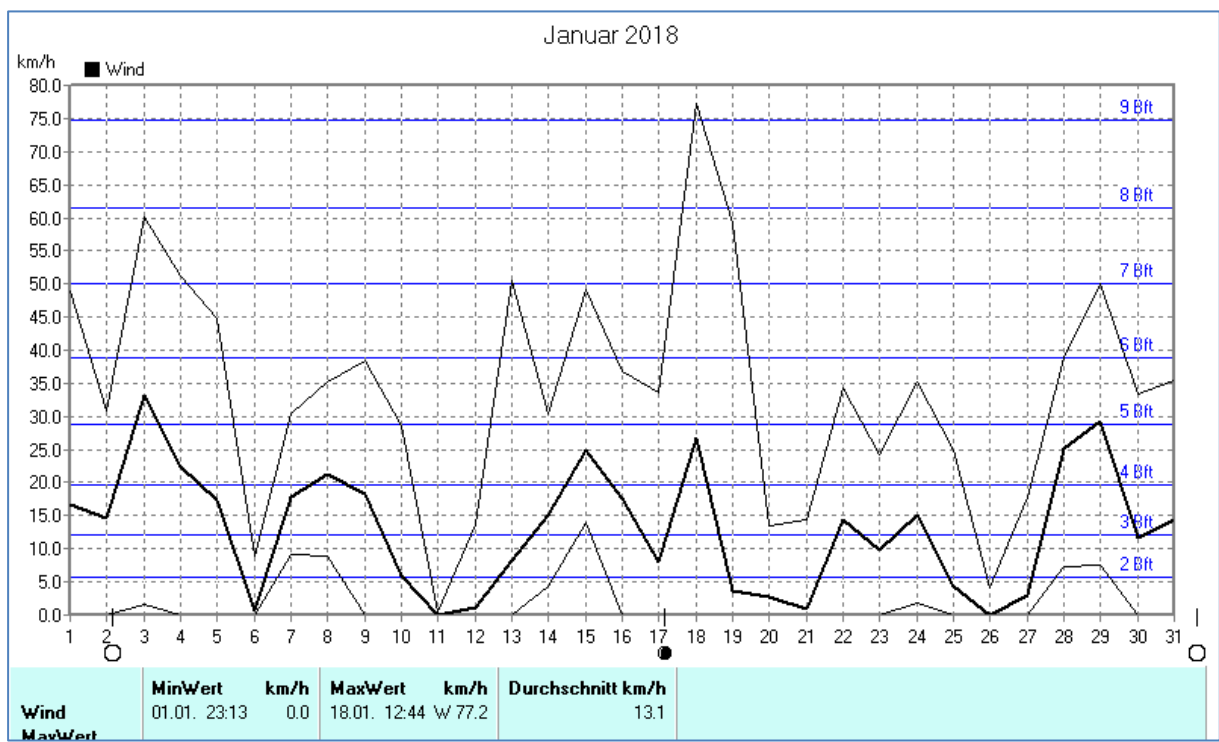
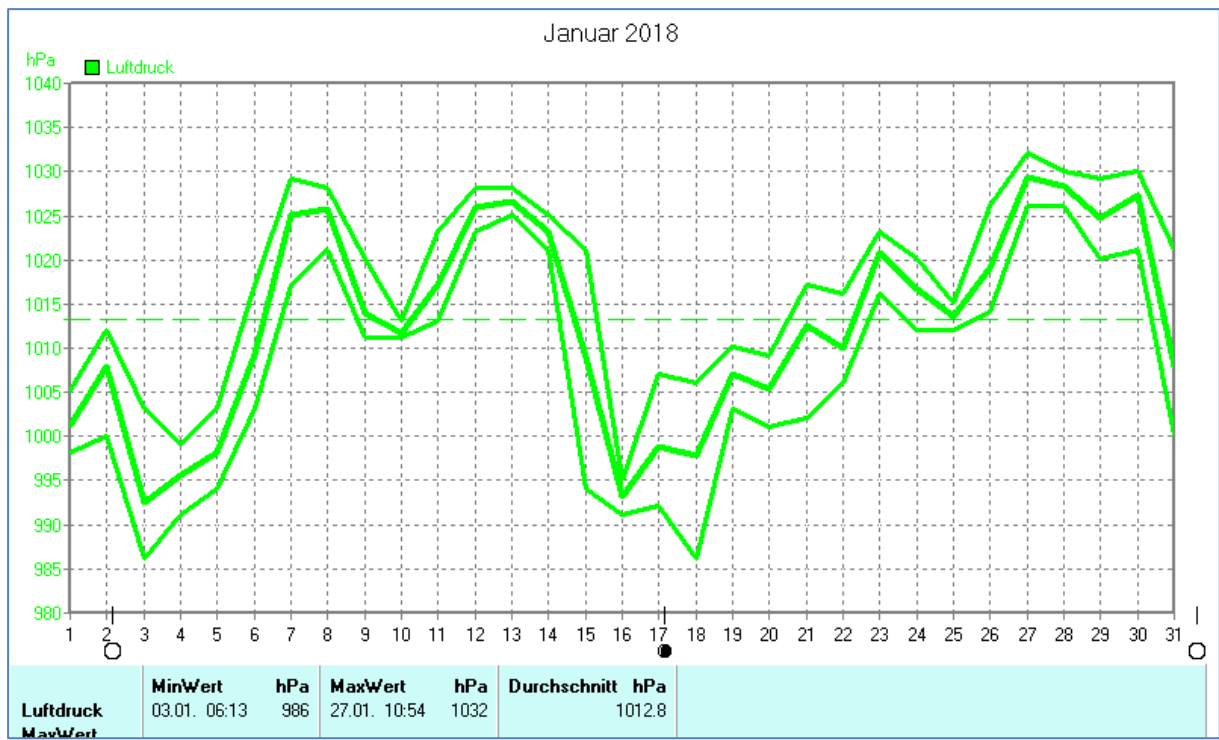


Wettertabelle und Grafiken Januar 2018 Station Dahl

| <u>Wetterdaten Januar 2018 Station Dahl</u> | | | | | | | |
|---|---------|-------|------------|-----------------------|-------|------------|---------------------------|
| Meßgröße | Minimum | Zeit | Datum | Maximum | Zeit | Datum | Durchschnitt |
| Temperatur | -2,8 °C | 20:53 | 13.01.2018 | 13,0 °C | 13:44 | 24.01.2018 | 4,4 °C |
| Bodentemp. | -1,0 °C | 00:04 | 08.01.2018 | 12,7 °C | 13:24 | 24.01.2018 | 3,8 °C |
| Luftfeuchte | 53 % | 23:24 | 27.01.2018 | 100 % | 06:14 | 17.01.2018 | 83 % |
| Luftdruck | 986 hPa | 06:13 | 03.01.2018 | 1032 hPa | 10:54 | 27.01.2018 | 1013 hPa |
| Wind km/h | | | | 77,2 km/h | 12:44 | 18.01.2018 | 13,1 km/h |
| Wind ° | | | | W | 12:44 | 18.01.2018 | W |
| Regen l/m ² | | | | 19,8 l/m ² | 03:13 | 03.01.2018 | #123,120 l/m ² |
| Sonne h | | | | 3:40 h | 13:34 | 14.01.2018 | #14:36 h |

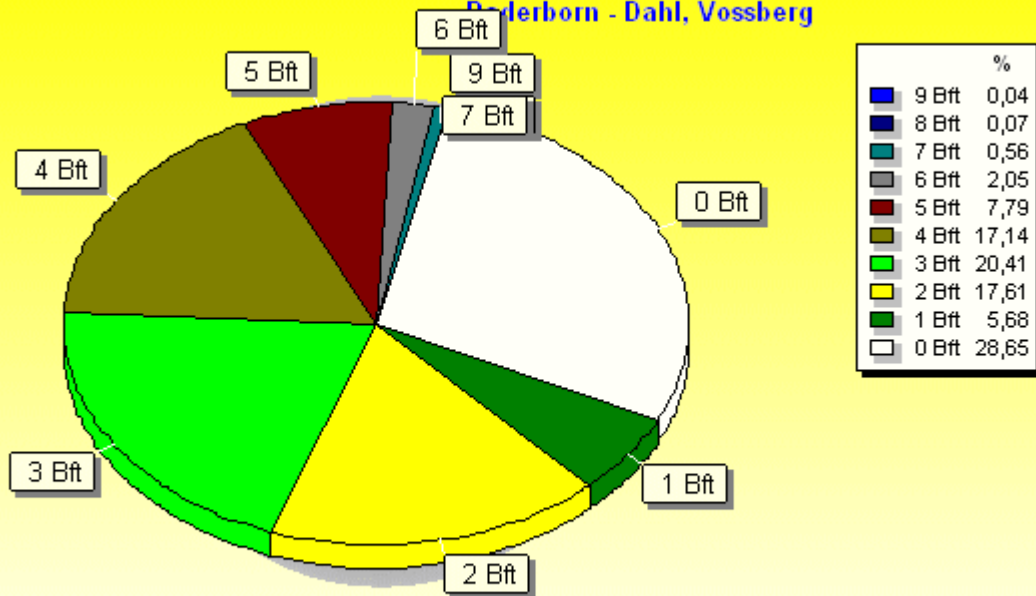






Verteilung Windstärke Januar 2018

Paderborn - Dahl, Vossberg

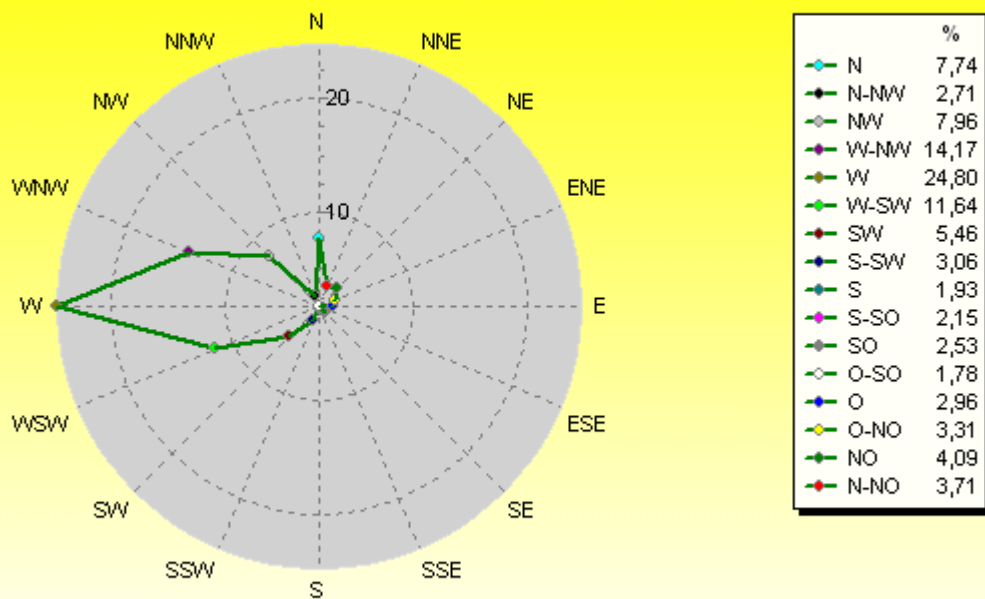


4492 Werte - Ø 13,1km/h - Max. 77,2km/h

© WzWin32

Verteilung Windrichtung Januar 2018

Paderborn - Dahl, Vossberg



3205 / 1287 Werte -> 28.7% Windstille - Ø 13,1km/h - Max. 77,2km/h

© WzWin32

