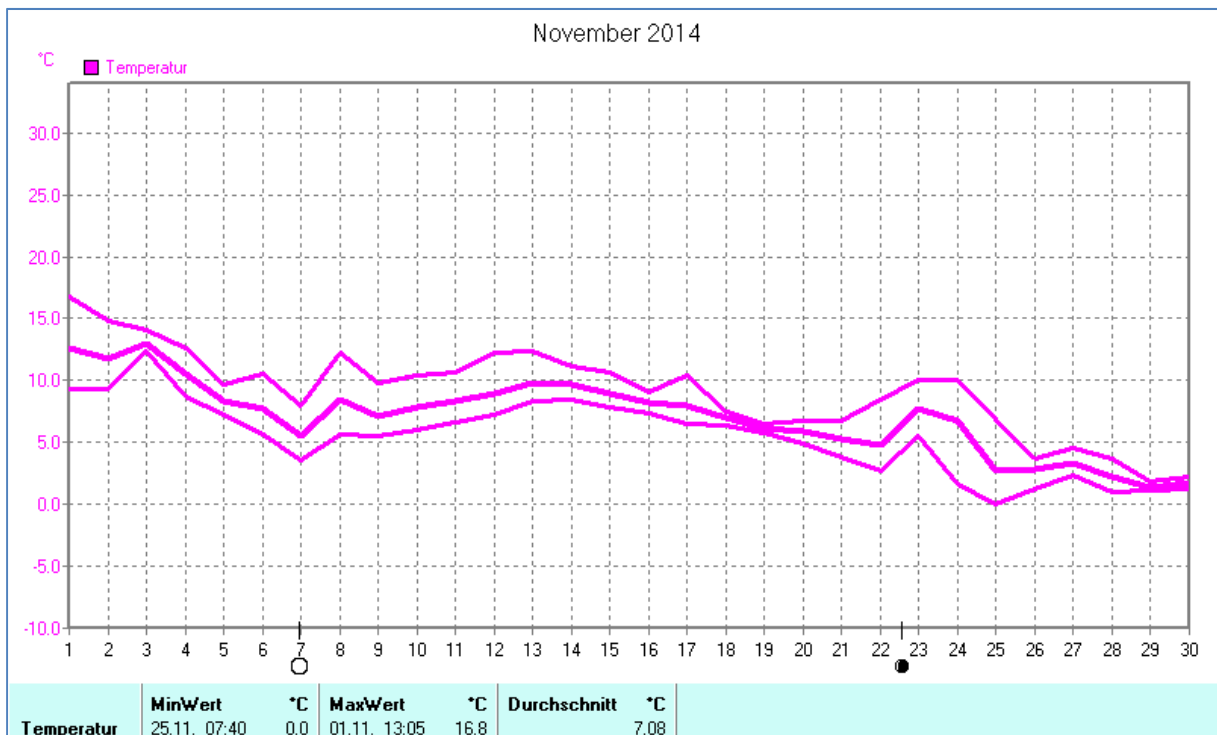
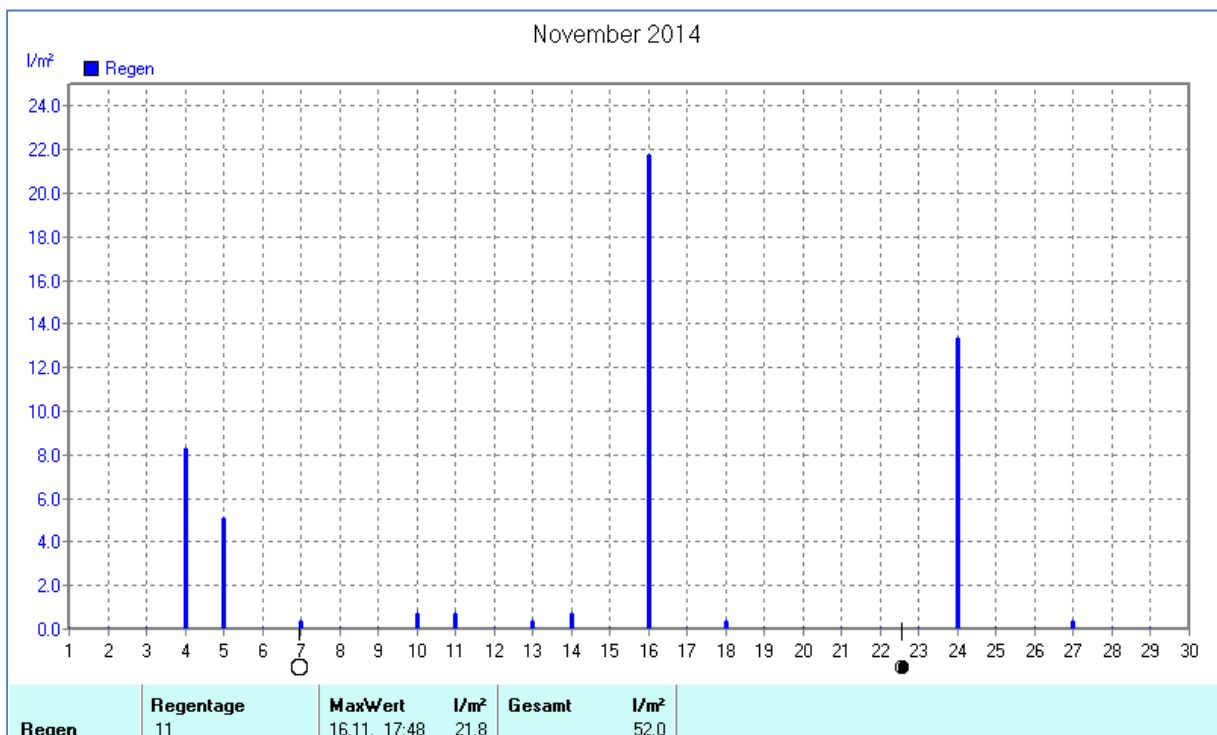
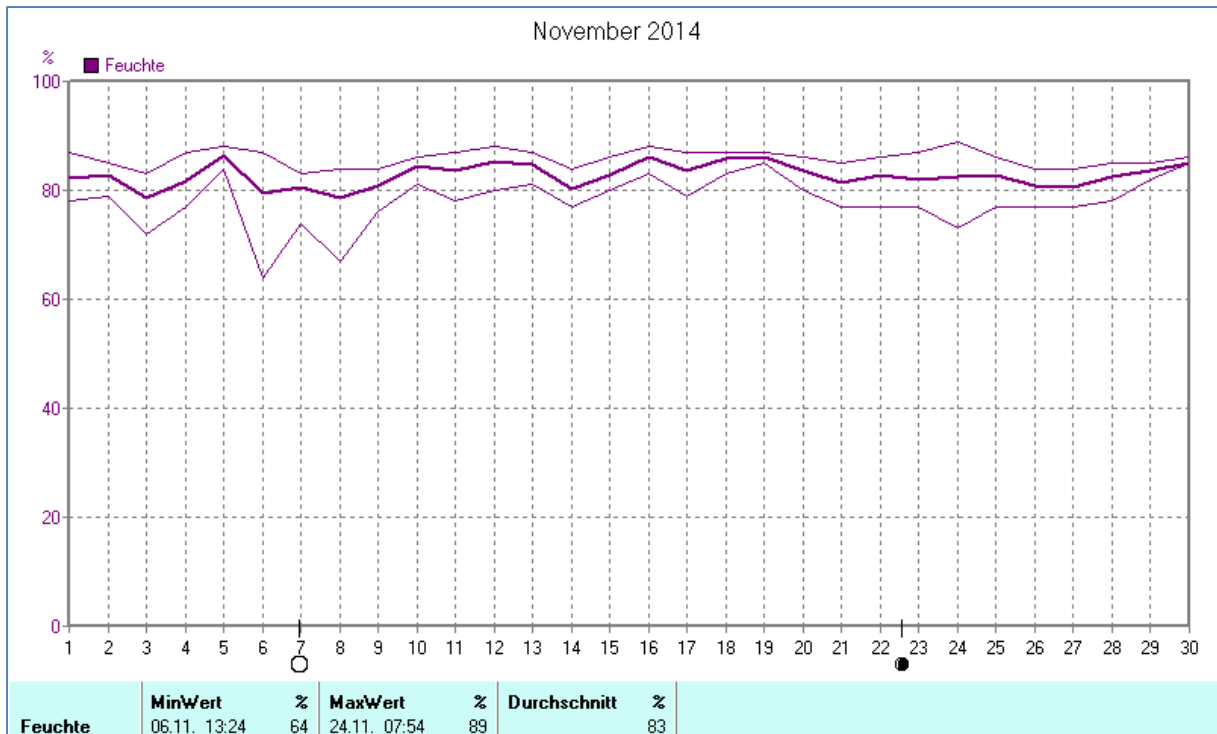
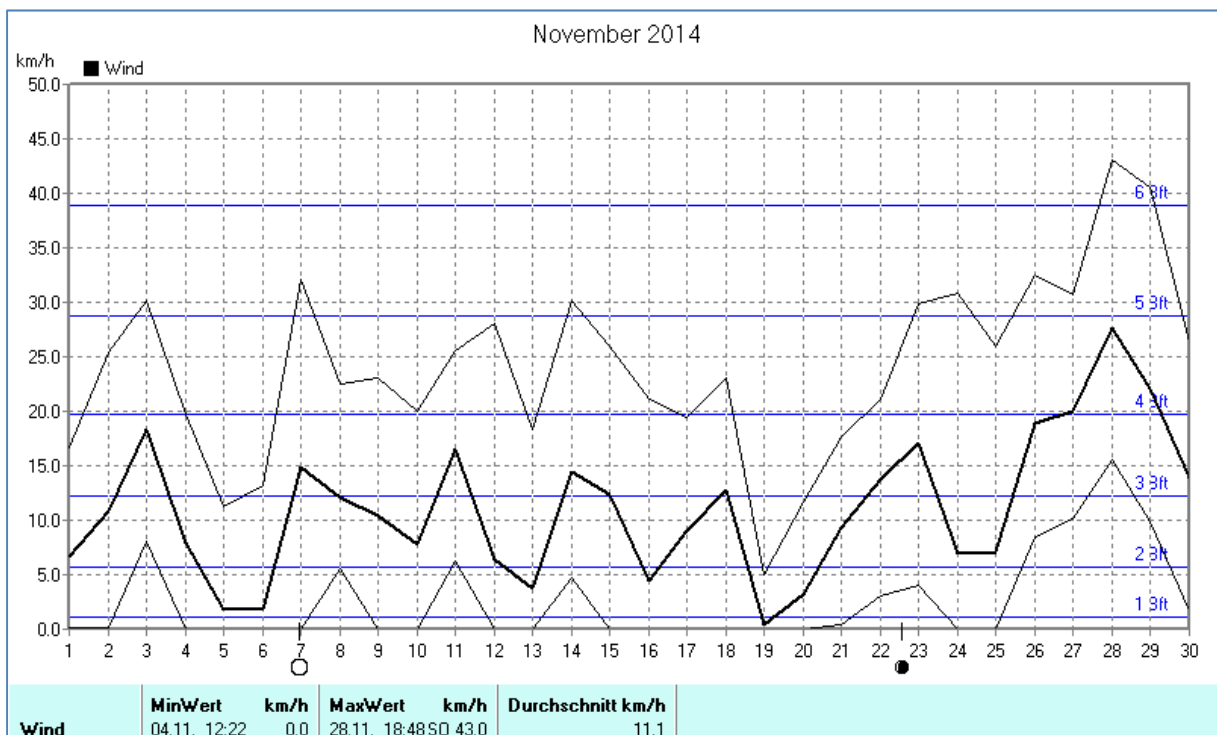
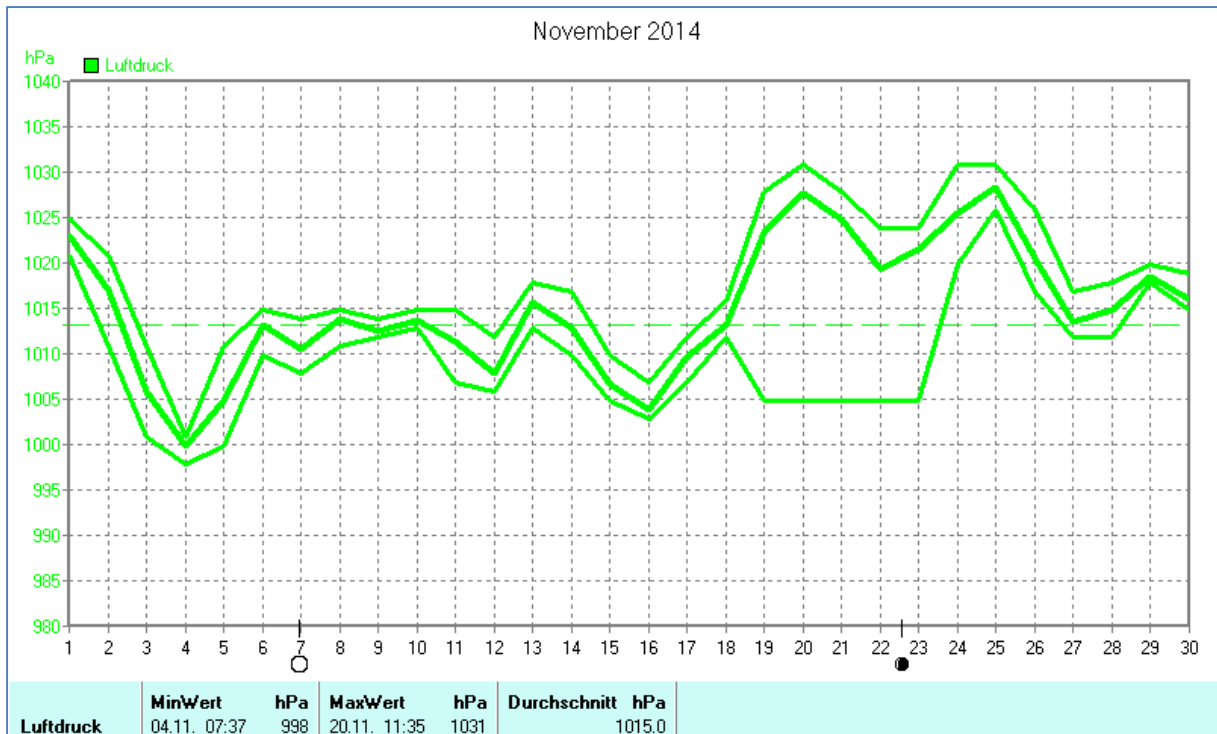


## Wettertabelle und Grafiken November 2014 Station Dahl

Wetterdaten November 2014 Station Dahl							
Meßgröße	Minimum	Zeit	Datum	Maximum	Zeit	Datum	Durchschnitt
Temperatur	0,0 °C	07:40	25.11.2014	16,8 °C	13:05	01.11.2014	7,1 °C
Bodentemp.	-1,4 °C	07:40	25.11.2014	19,0 °C	13:20	01.11.2014	6,9 °C
Luftfeuchte	64 %	13:24	06.11.2014	89 %	07:54	24.11.2014	83 %
Luftdruck	998 hPa	07:37	04.11.2014	1031 hPa	11:35	20.11.2014	1015 hPa
Wind km/h				43,0 km/h	18:48	28.11.2014	11,1 km/h
Wind °				SO	18:48	28.11.2014	S-SO
Regen l/m²				21,8 l/m²	17:48	16.11.2014	#52,000 l/m²
Sonne h				- min.	00:00	00.00.1980	#41:04 h

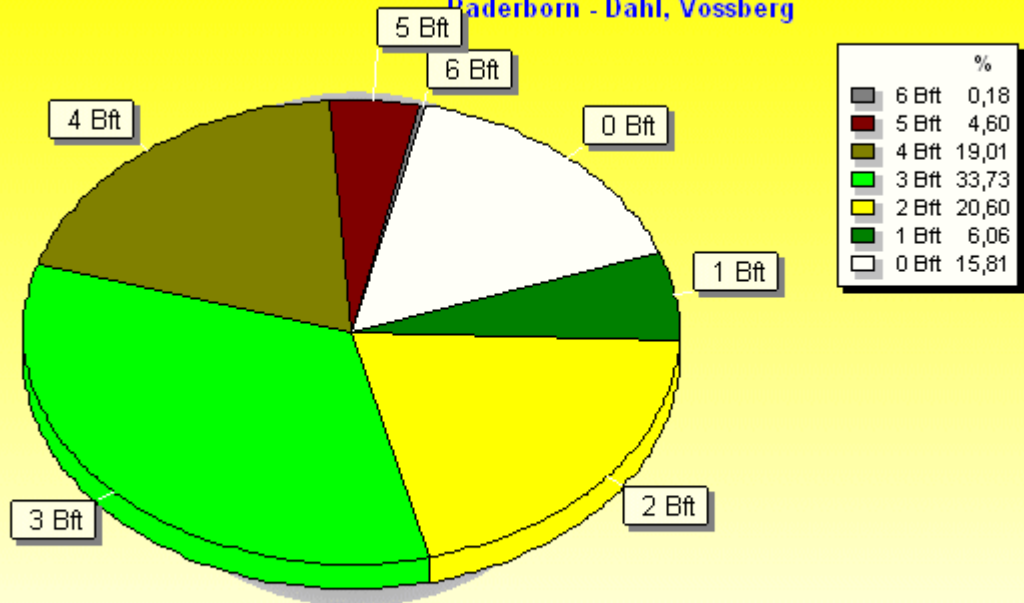






### Verteilung Windstärke November 2014

Paderborn - Dahl, Vossberg

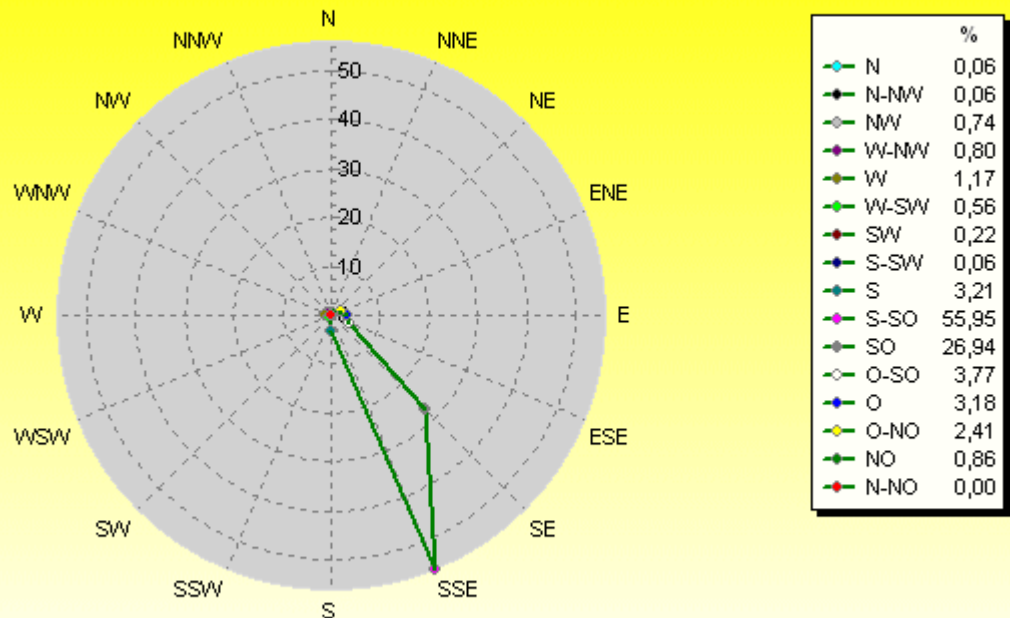


3845 Werte - Ø 11,1km/h - Max. 43,0km/h

© WzWin32

### Verteilung Windrichtung November 2014

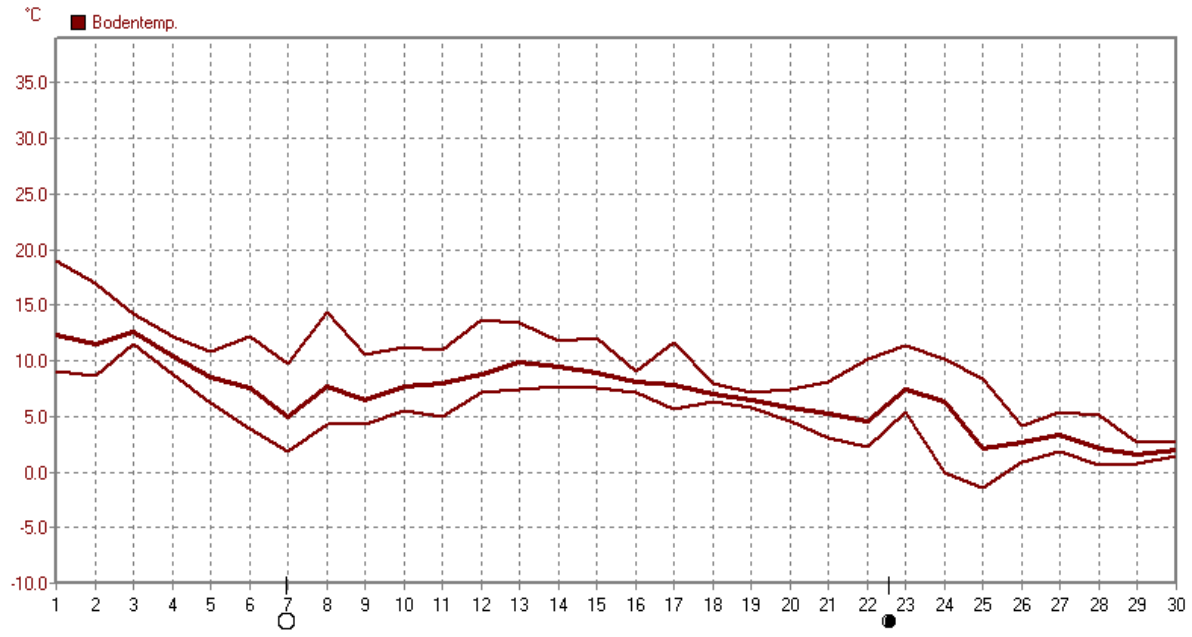
Paderborn - Dahl, Vossberg



3237 / 608 Werte -> 15.8% Windstille - Ø 11,1km/h - Max. 43,0km/h

© WzWin32

November 2014



	MinWert °C	MaxWert °C	Durchschnitt °C
Bodentemp.	25.11. 07:40 -1.4	01.11. 13:20 19.0	6.91