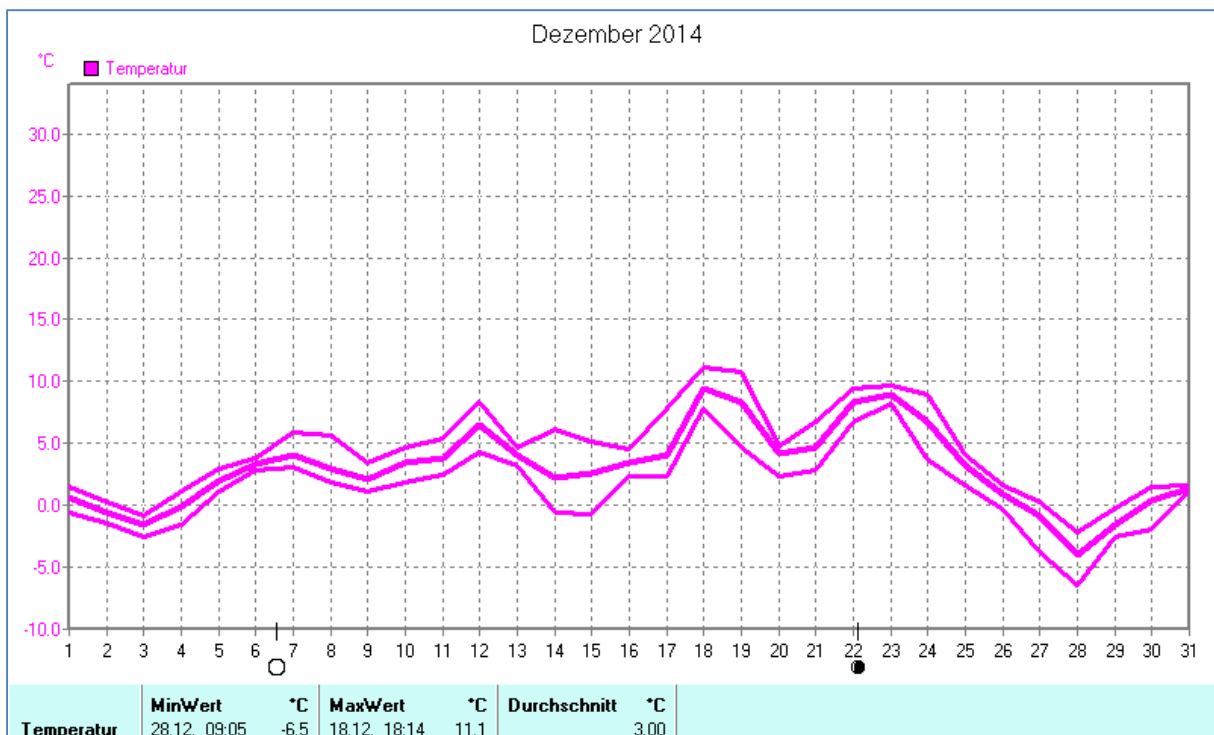
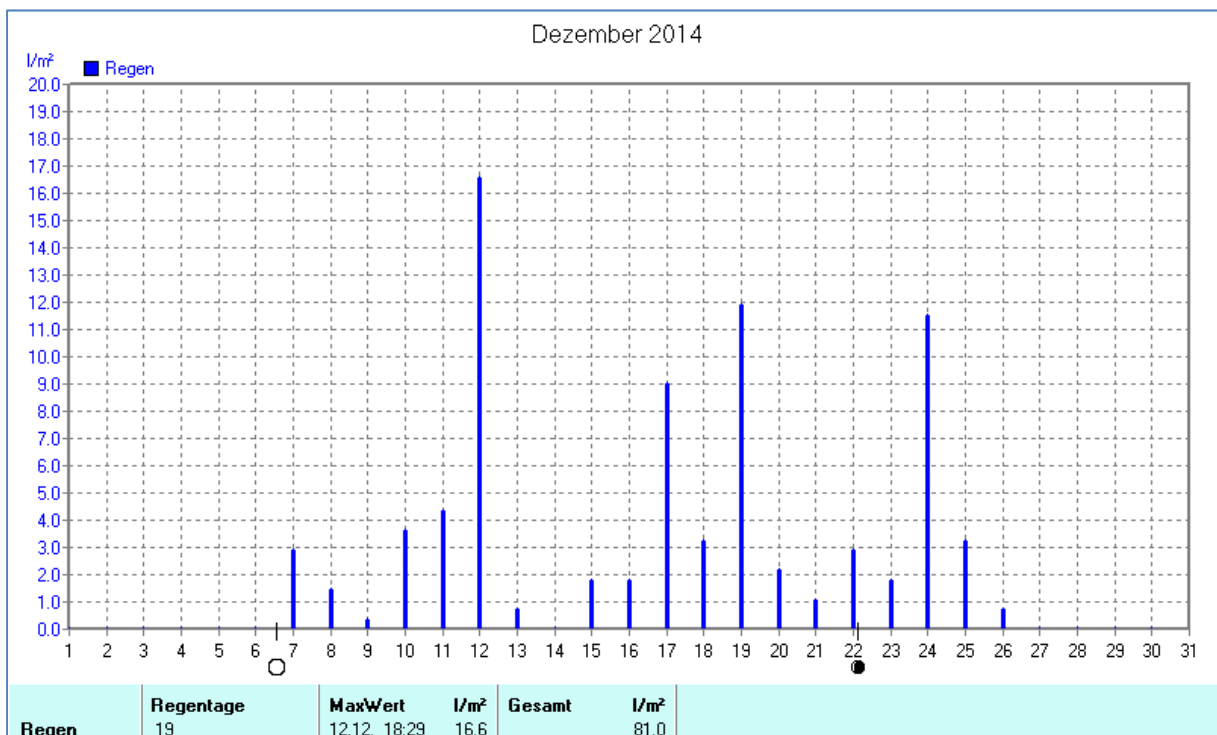
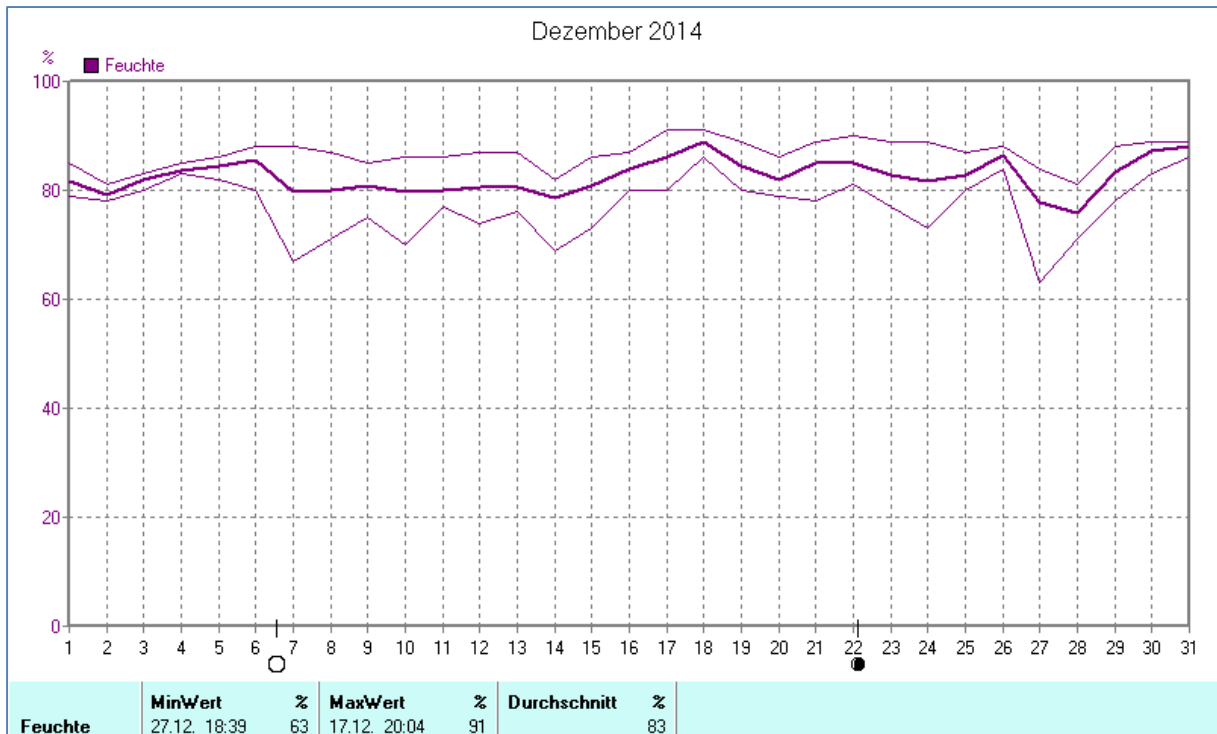
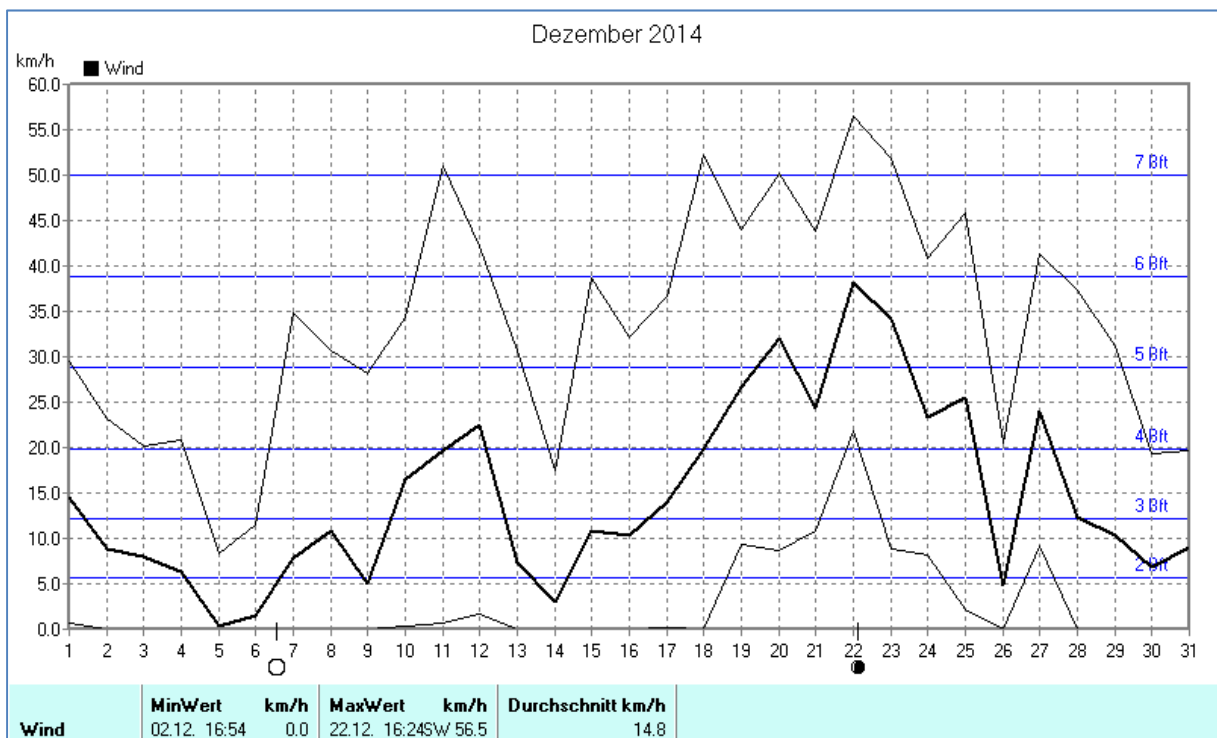
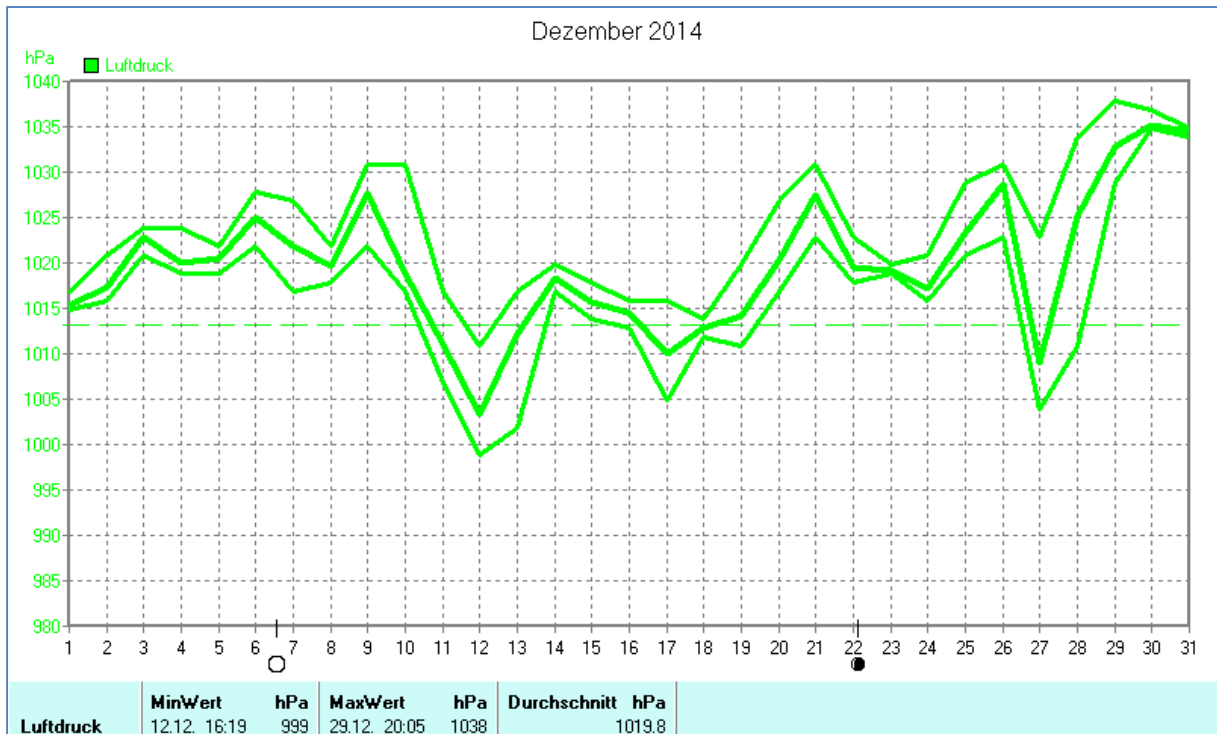


## Wettertabelle und Grafiken Dezember 2014 Station Dahl

<u>Wetterdaten Dezember 2014 Station Dahl</u>							
Meßgröße	Minimum	Zeit	Datum	Maximum	Zeit	Datum	Durchschnitt
Temperatur	-6,5 °C	09:05	28.12.2014	11,1 °C	18:14	18.12.2014	3,0 °C
Bodentemp.	-7,4 °C	09:00	28.12.2014	11,2 °C	18:00	18.12.2014	3,0 °C
Luftfeuchte	63 %	18:39	27.12.2014	91 %	20:04	17.12.2014	83 %
Luftdruck	999 hPa	16:19	12.12.2014	1038 hPa	20:05	29.12.2014	1020 hPa
Wind km/h				56,5 km/h	16:24	22.12.2014	14,8 km/h
Wind °				W-SW	16:24	22.12.2014	W-SW
Regenmenge				16,6 l/m <sup>2</sup>	18:29	12.12.2014	#81,000 l/m <sup>2</sup>
Sonne h				3:56 h	13:19	28.12.2014	#10:47 h

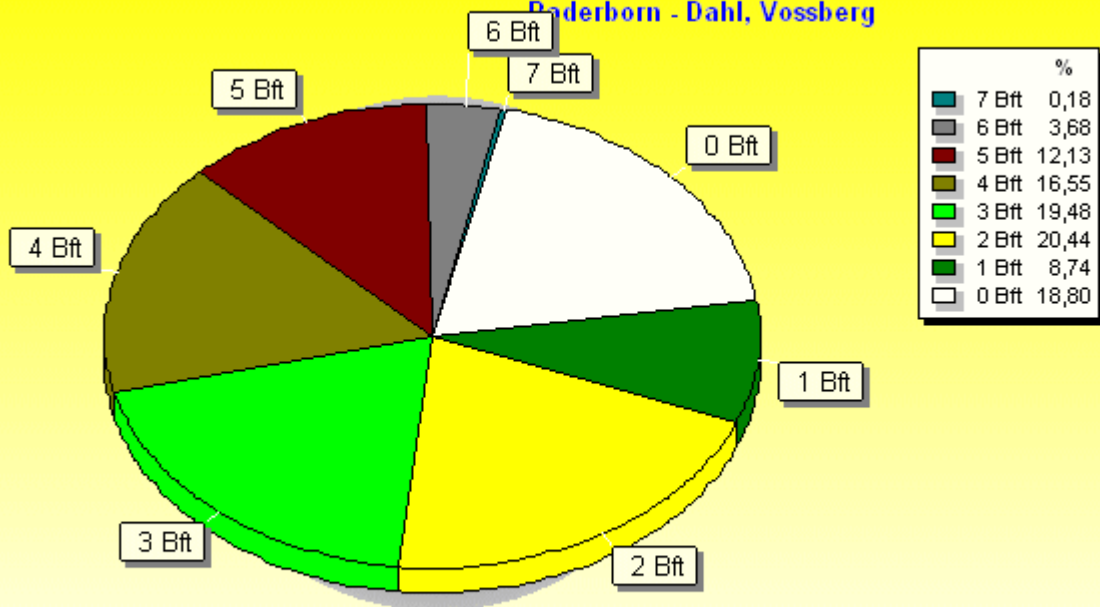






### Verteilung Windstärke Dezember 2014

Paderborn - Dahl, Vossberg

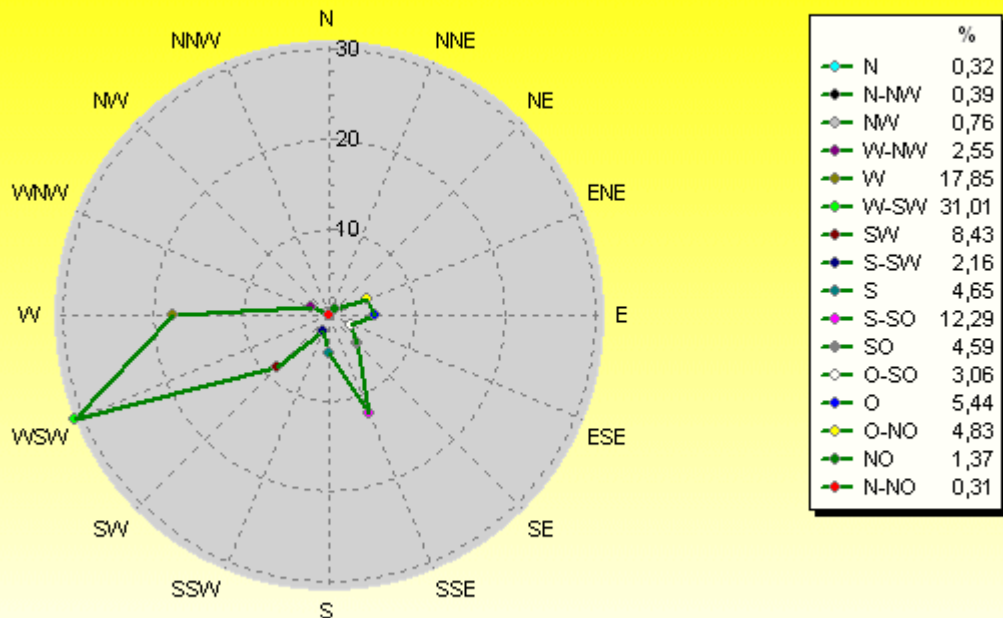


8880 Werte - Ø 14,8km/h - Max. 56,5km/h

© WzWin32

### Verteilung Windrichtung Dezember 2014

Paderborn - Dahl, Vossberg



7211 / 1669 Werte -> 18.8% Windstille - Ø 14,8km/h - Max. 56,5km/h

© WzWin32

