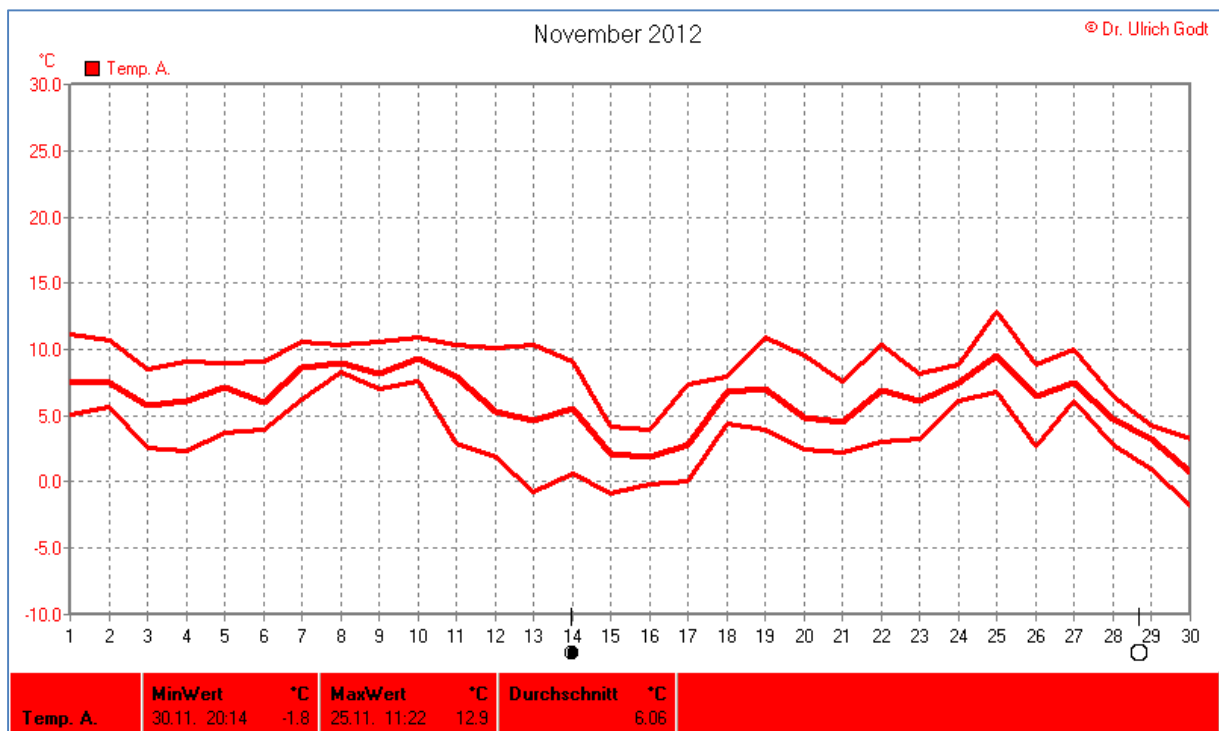
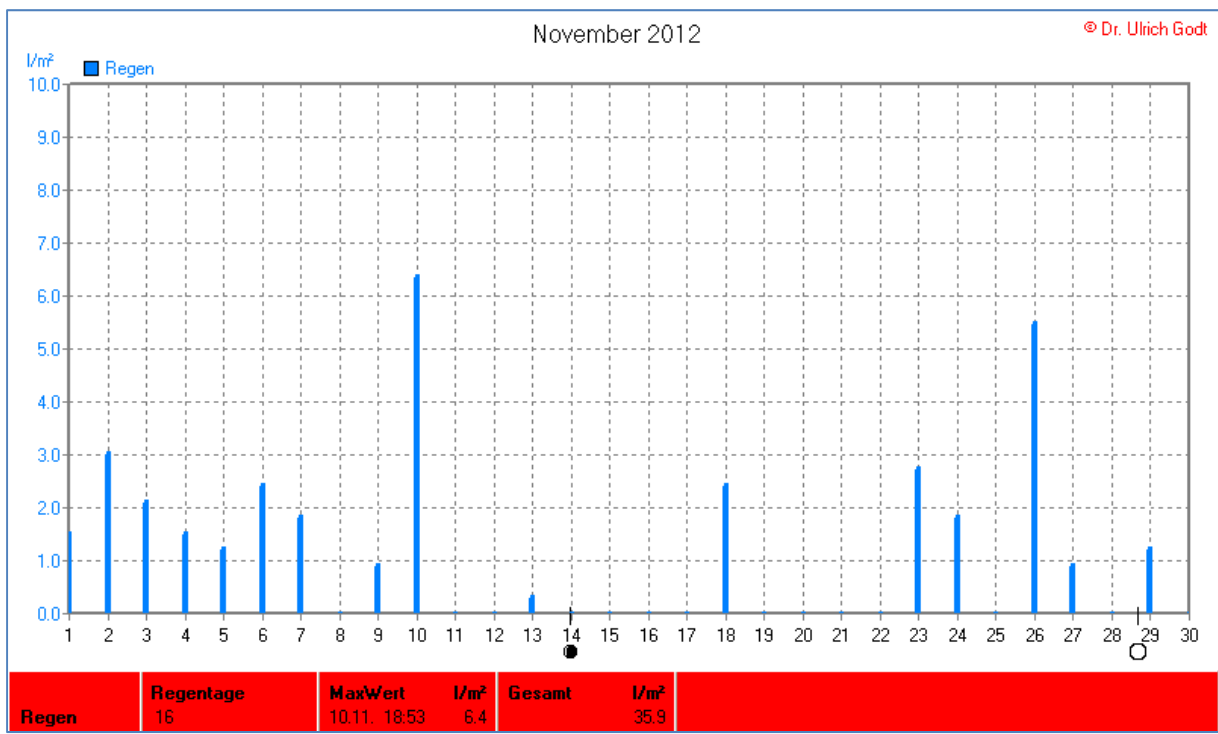
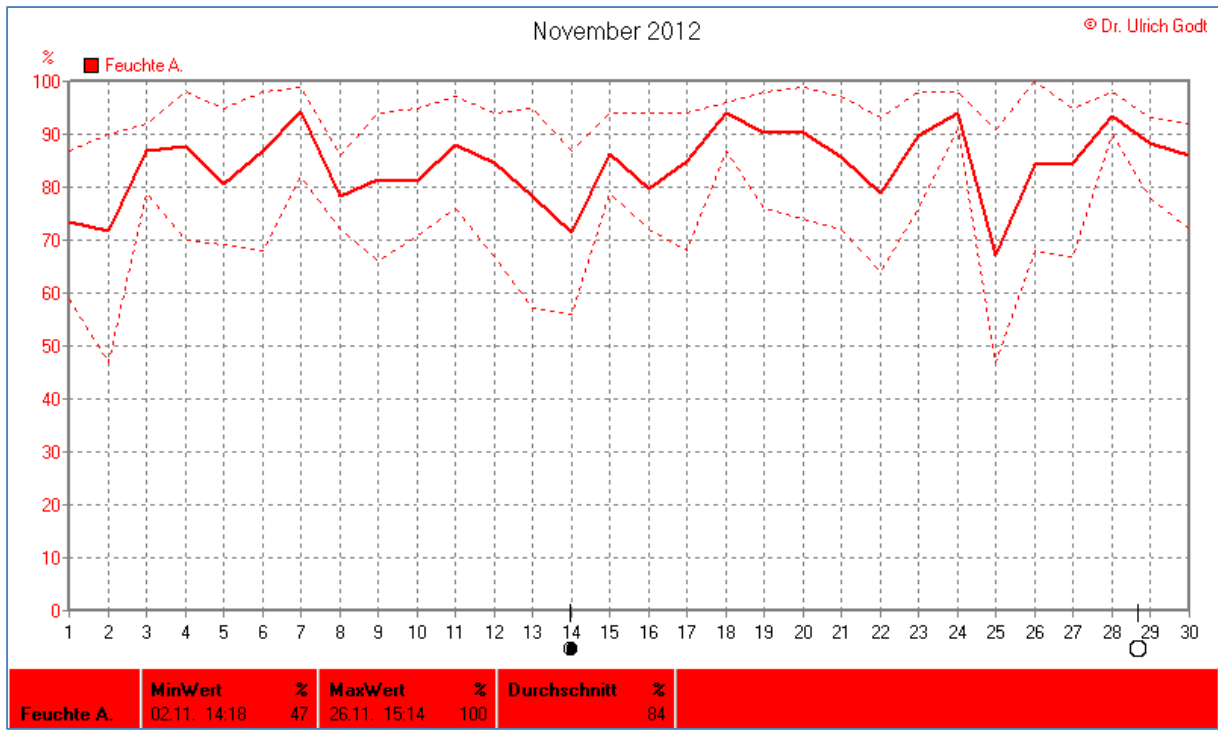


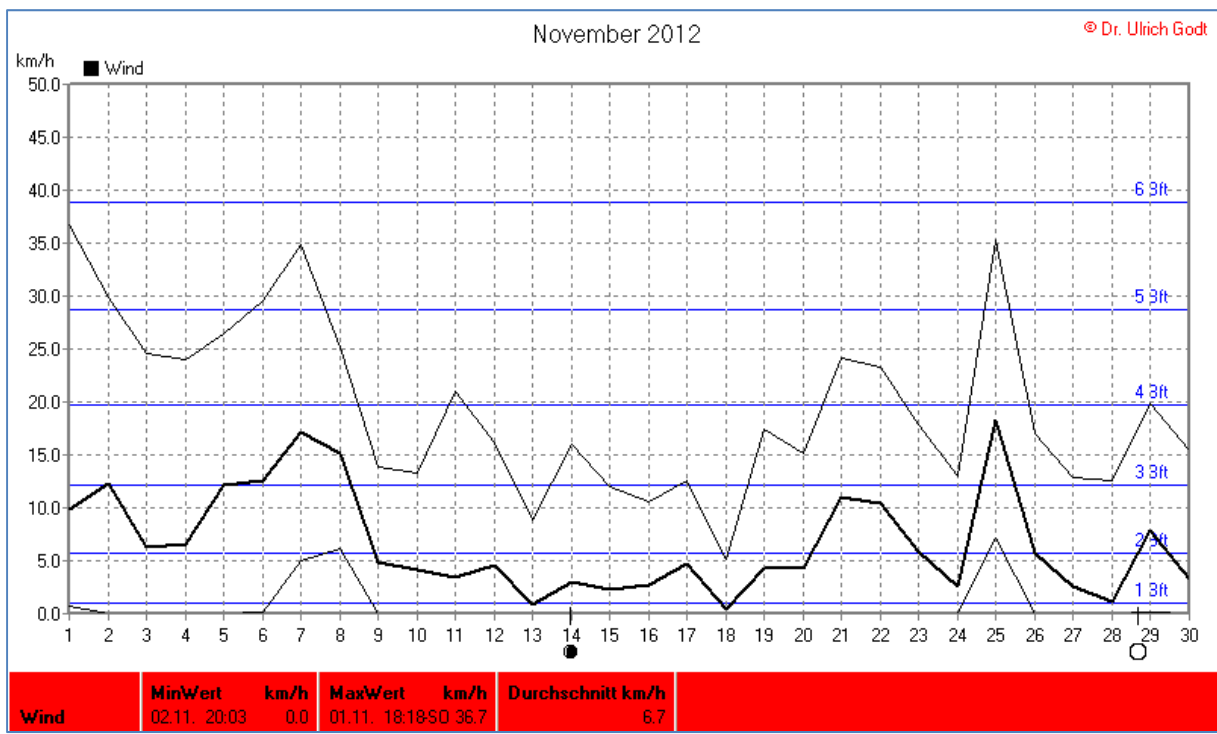
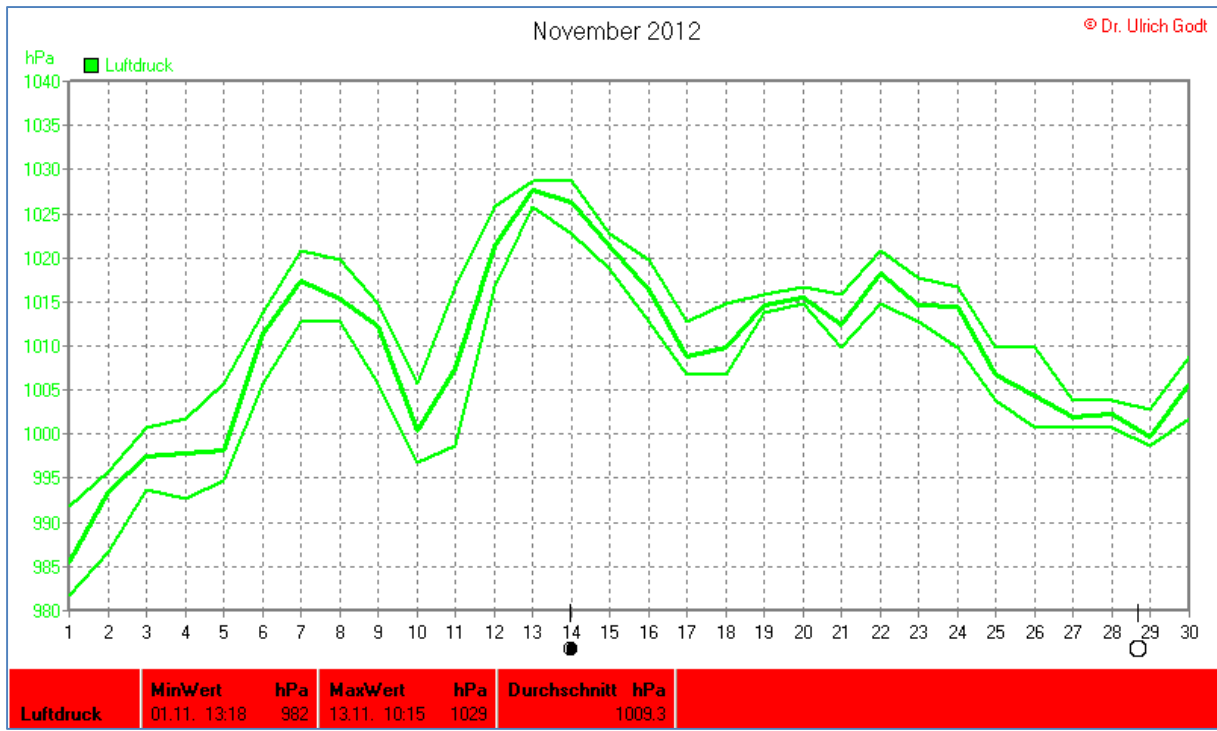
Wettertabelle und Grafiken November 2012 Station Eisen

Minimal- und Maximalwerte November 2012

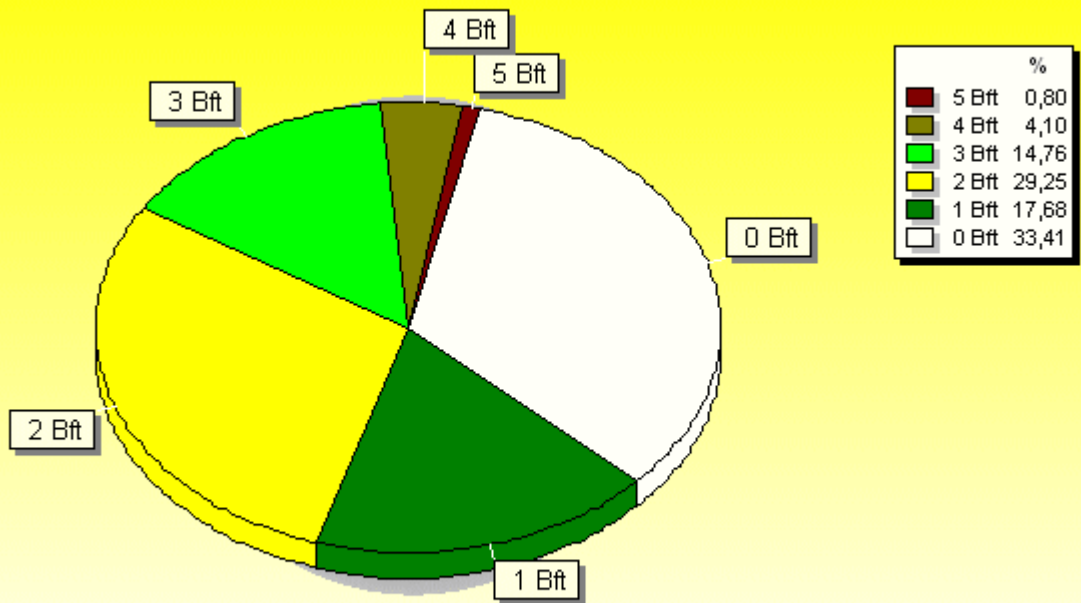
Messgröße	Mini	Zeit	Datum	Maxi	Zeit	Datum	Durchschnitt
Temperatur Außen	-1,8°C	20:14	30.11.12	12,9 °C	11:22	25.11.2012	6,1 °C
Temperatur Boden	1,8 °C	18:59	30.11.12	15,5 °C	12:52	22.11.2012	9,5 °C
Luftfeuchte Außen	47 %	14:18	02.11.12	100 %	15:14	26.11.2012	84 %
Luftdruck	982 hPa	13:18	01.11.12	1029 hPa	10:15	13.11.2012	1009 hPa
Wind km/h				36,7 km/h	18:18	01.11.2012	6,7 km/h
Wind °				S-SO	18:18	01.11.2012	SW
Regen l/m ²				6,4 l/m ²	18:53	10.11.2012	#35,872 l/m ²
Sonne h				6:30 h	14:37	20.11.2012	#60:30 h







Verteilung Windstärke November 2012

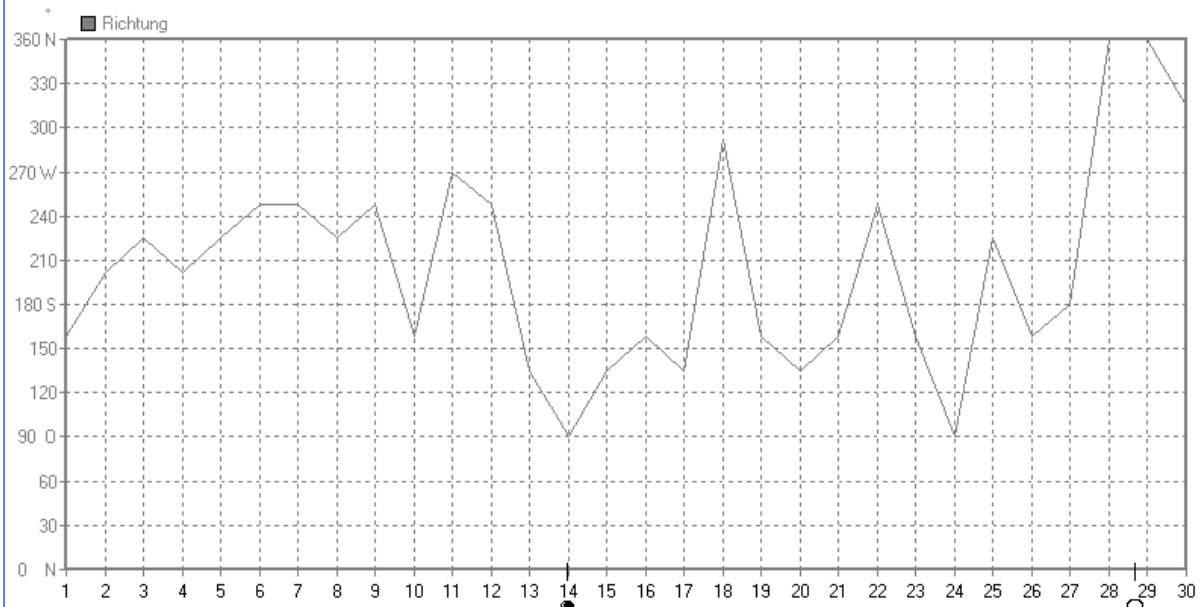


2879 Werte - Ø 6,7km/h - Max. 36,7km/h

© WzWin32

November 2012

© Dr. Ulrich Godt



Richtung	MinWert	MaxWert	Durchschnitt
	18.11. 19.07	N	18.11. 18.37
			N
			SW

