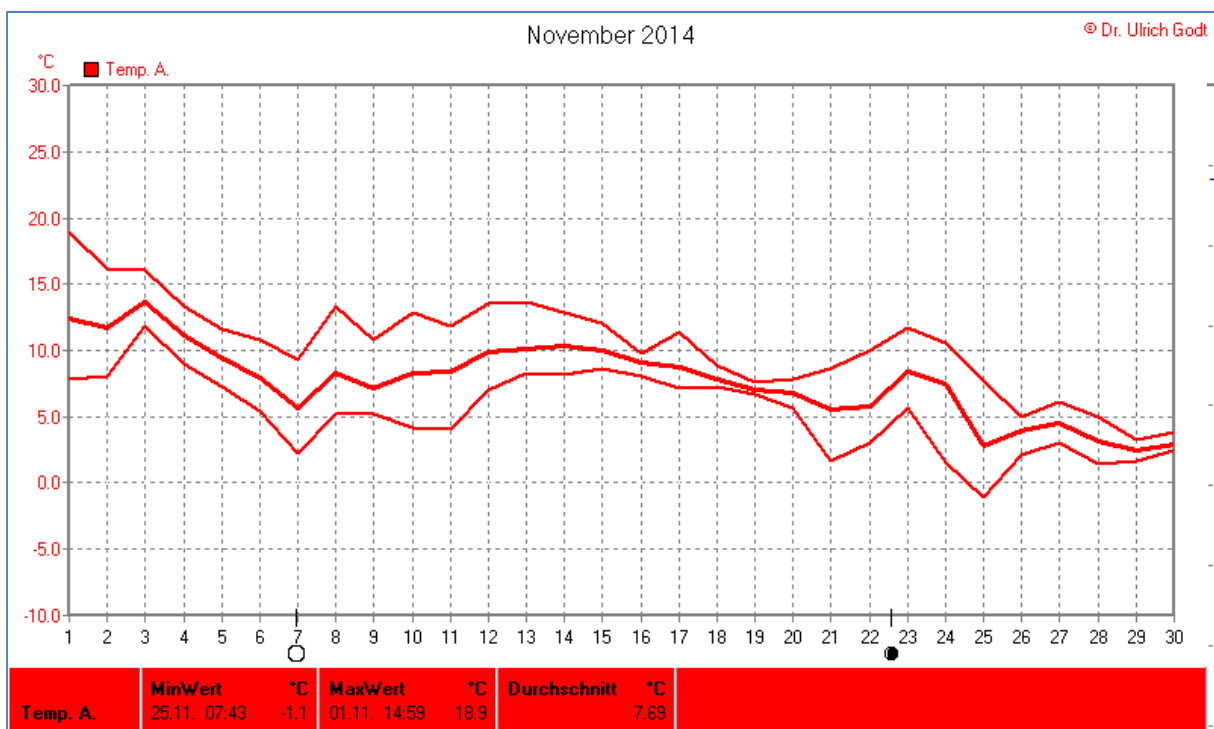
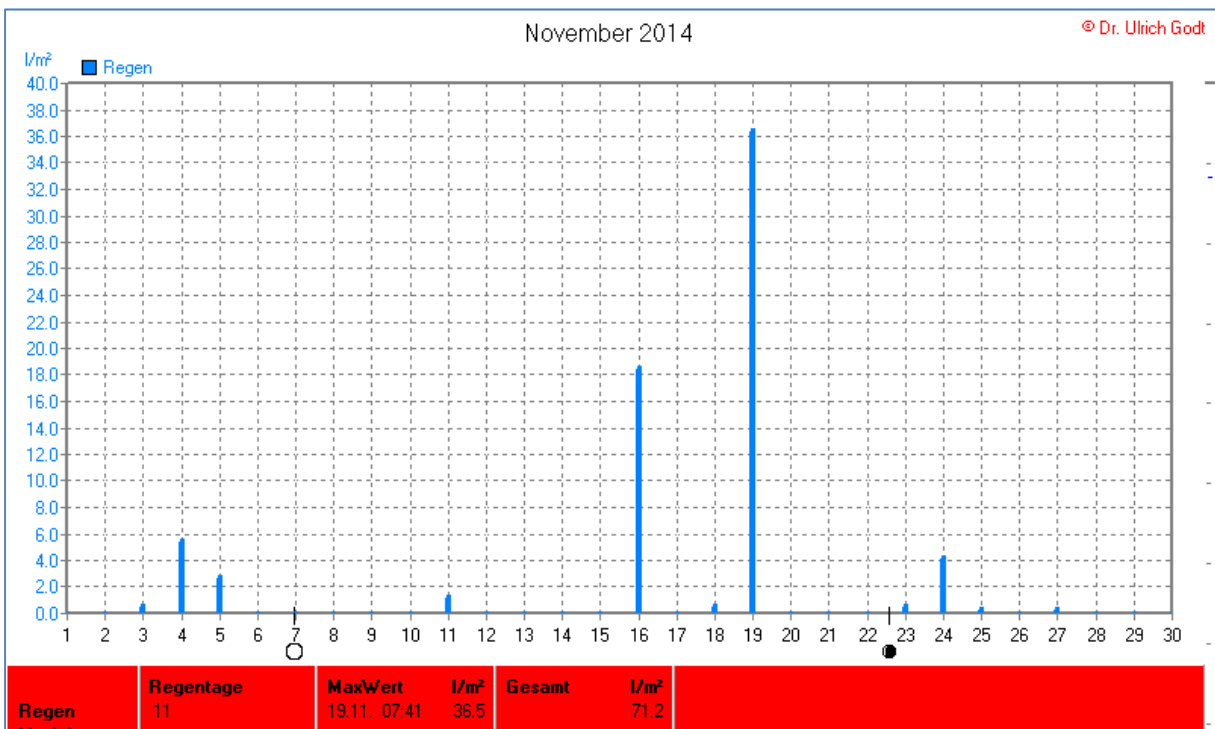
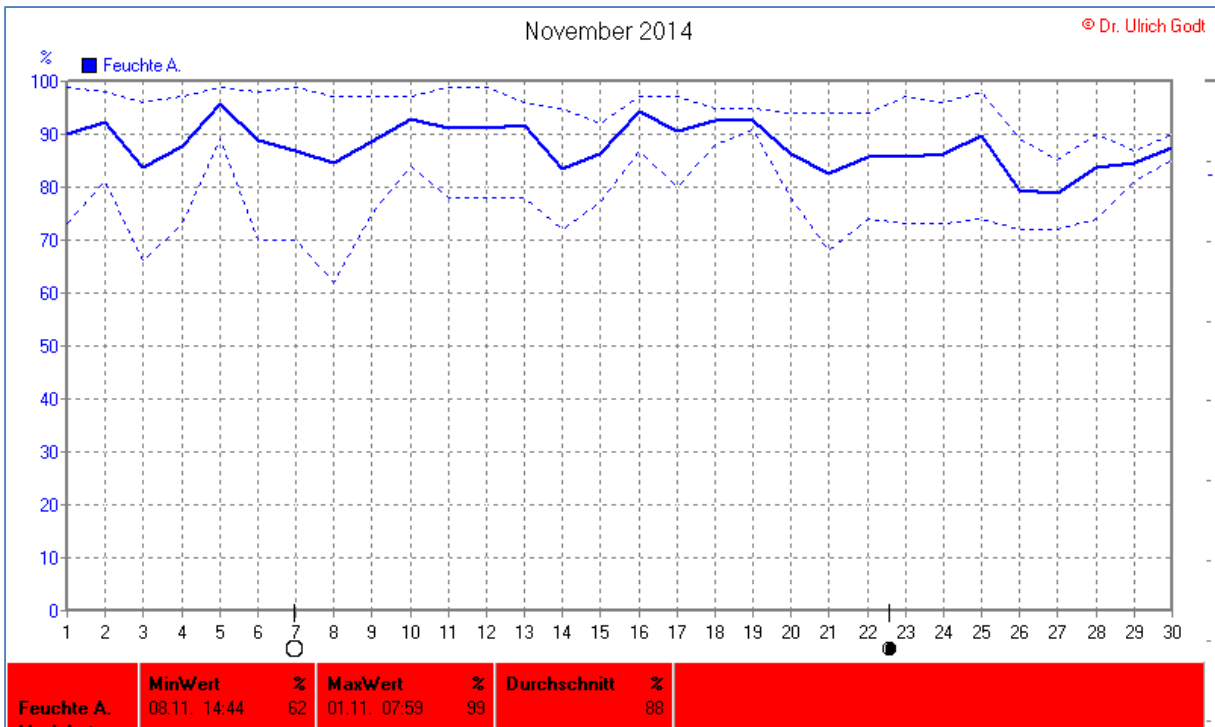
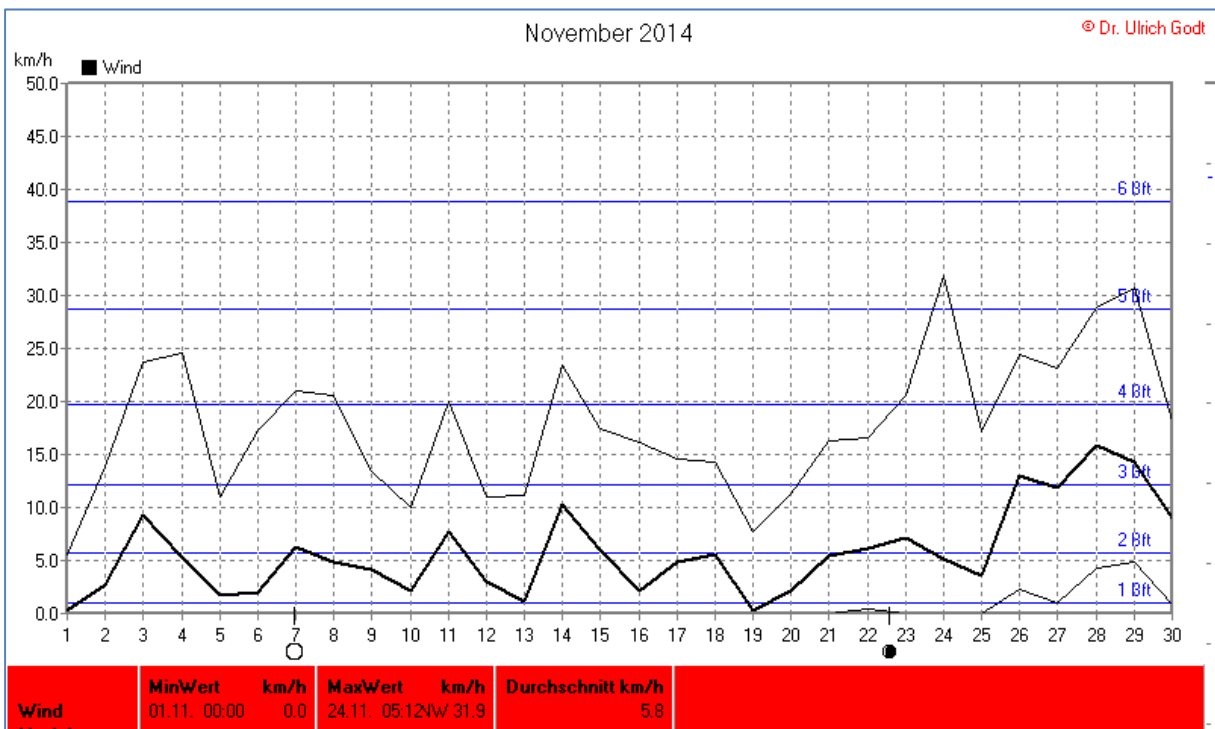
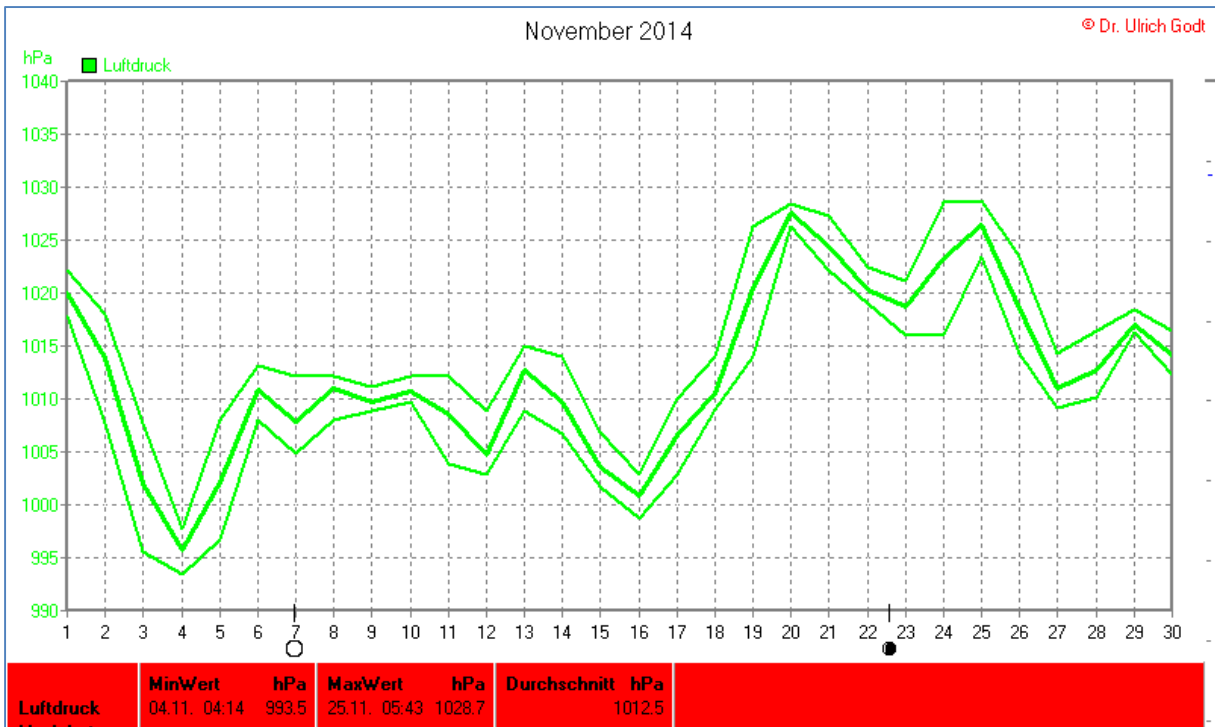


## Wettertabelle und Grafiken November 2014 Station Elsen

<b>Wetterdaten November 2014 Station Elsen</b>							
<b>© Dr. Ulrich Godt</b>							
Meßgröße	Minimum	Zeit	Datum	Maximum	Zeit	Datum	Durchschnitt
Lufttemp.	-1,1 °C	07:43	25.11.2014	18,9 °C	14:59	01.11.2014	7,7 °C
Bodentemp.	2,4 °C	07:58	25.11.2014	56,1 °C	11:28	25.11.2014	9,1 °C
Luftfeuchte	62 %	14:44	08.11.2014	99 %	07:59	01.11.2014	88 %
Luftdruck	993,5 hPa	04:14	04.11.2014	1028,7 hPa	05:43	25.11.2014	1012,5 hPa
Wind km/h				31,9 km/h	05:12	24.11.2014	5,8 km/h
Wind °				NW	05:12	24.11.2014	SO
Regenmenge				36,5 l/m <sup>2</sup>	07:41	19.11.2014	#71,160 l/m <sup>2</sup>
Sonne h				5:45 h	14:29	08.11.2014	#67:58 h

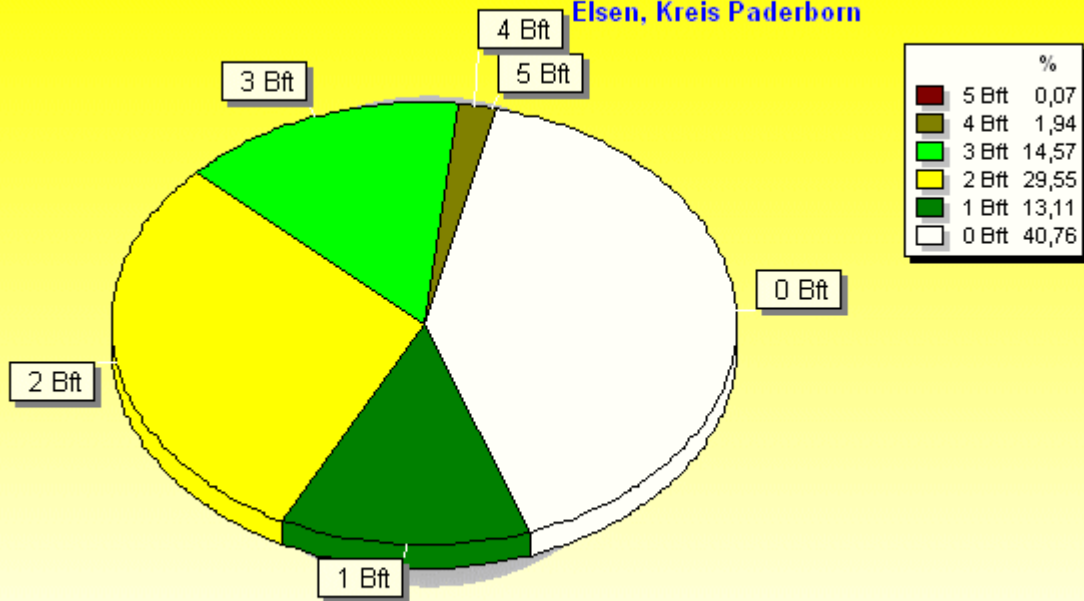






### Verteilung Windstärke November 2014

Elsen, Kreis Paderborn

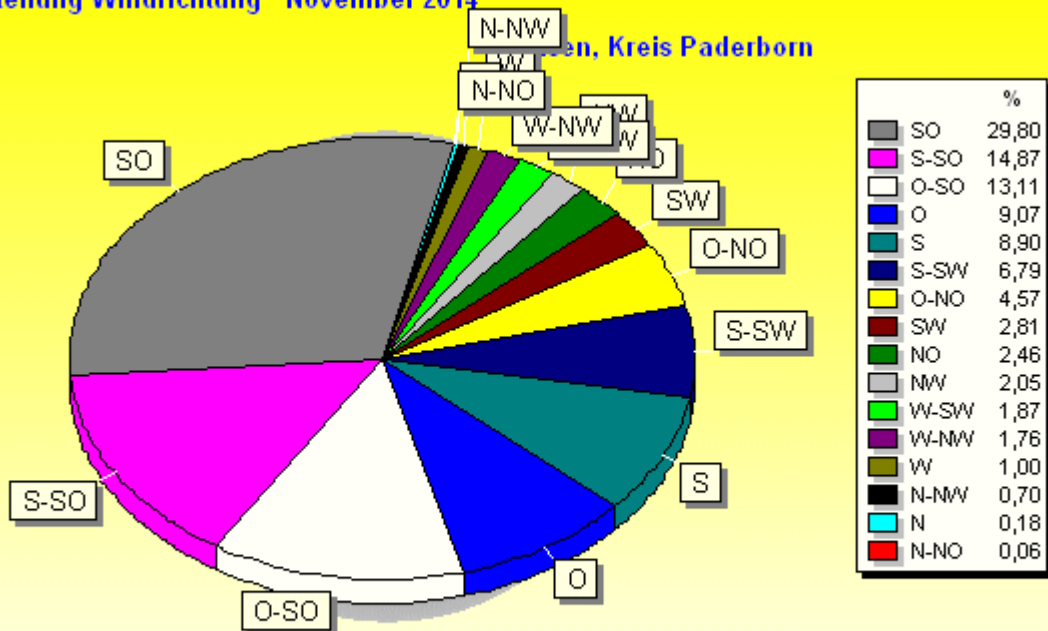


2883 Werte - Ø 5,8km/h - Max. 31,9km/h

© WzWin32 - © Dr. Ulrich Godt - Elsen, Kreis Paderborn

### Verteilung Windrichtung November 2014

Elsen, Kreis Paderborn



1708 / 1175 Werte -> 40.8% Windstille - Ø 5,8km/h - Max. 31,9km/h

© WzWin32 - © Dr. Ulrich Godt - Elsen, Kreis Paderborn

