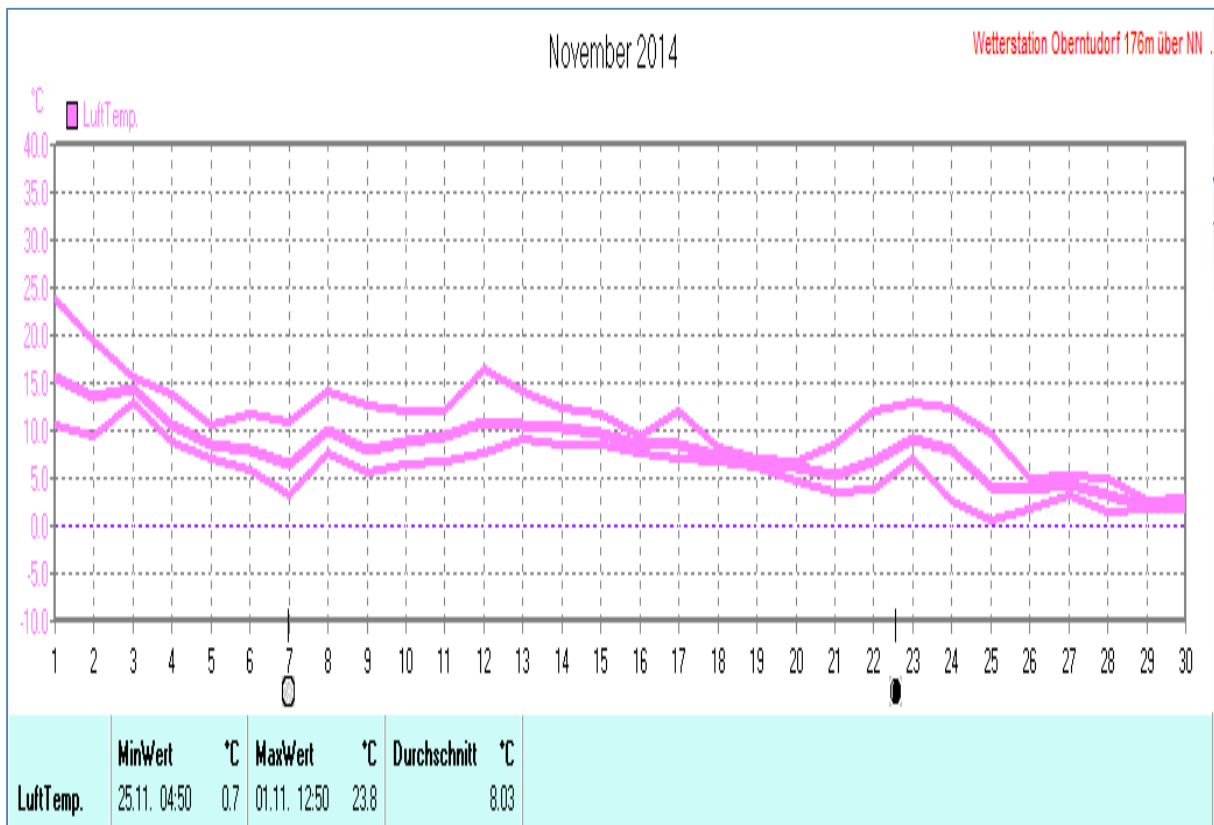
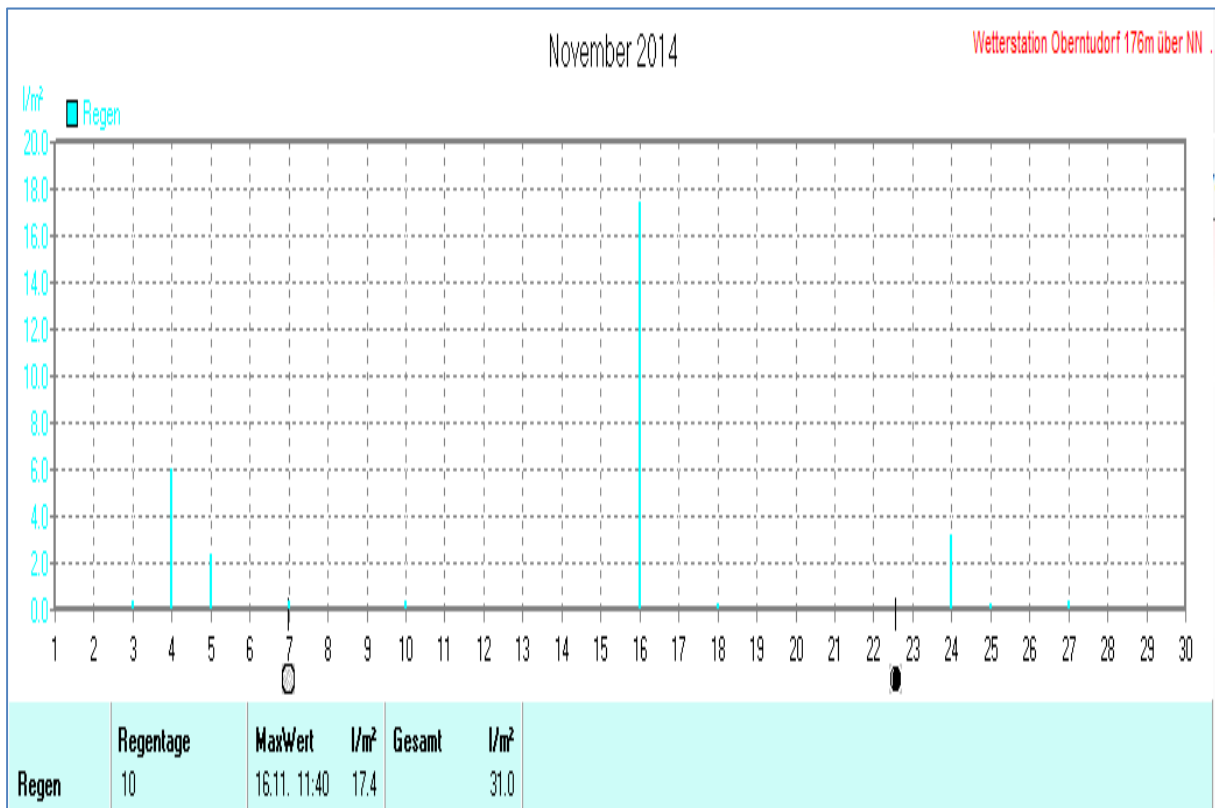
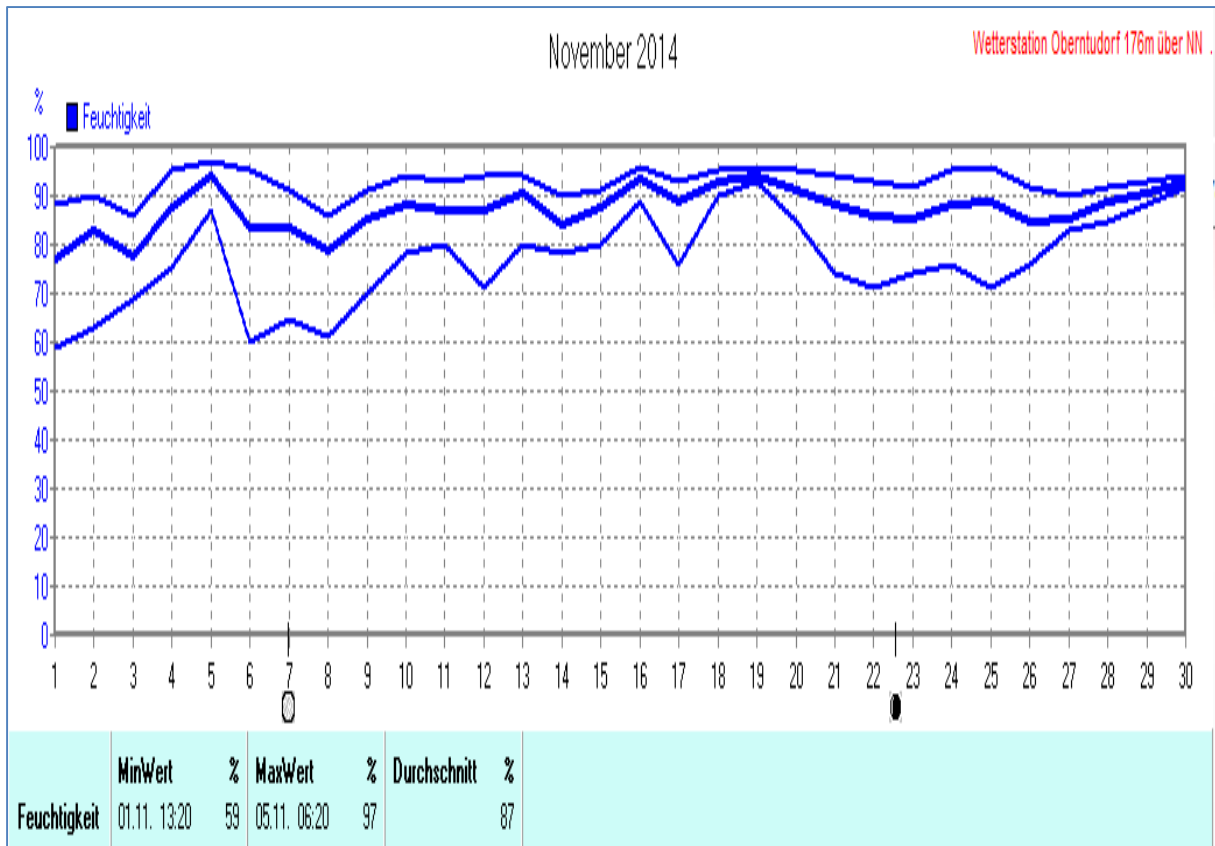
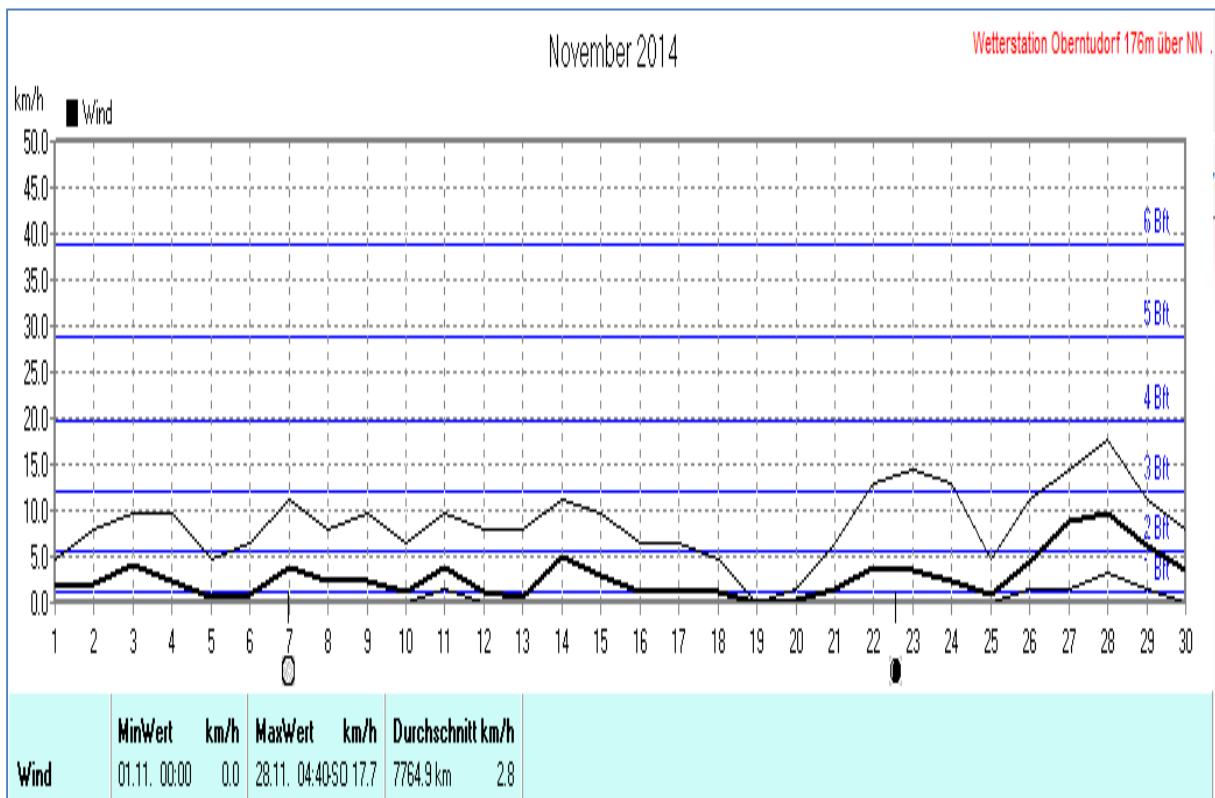
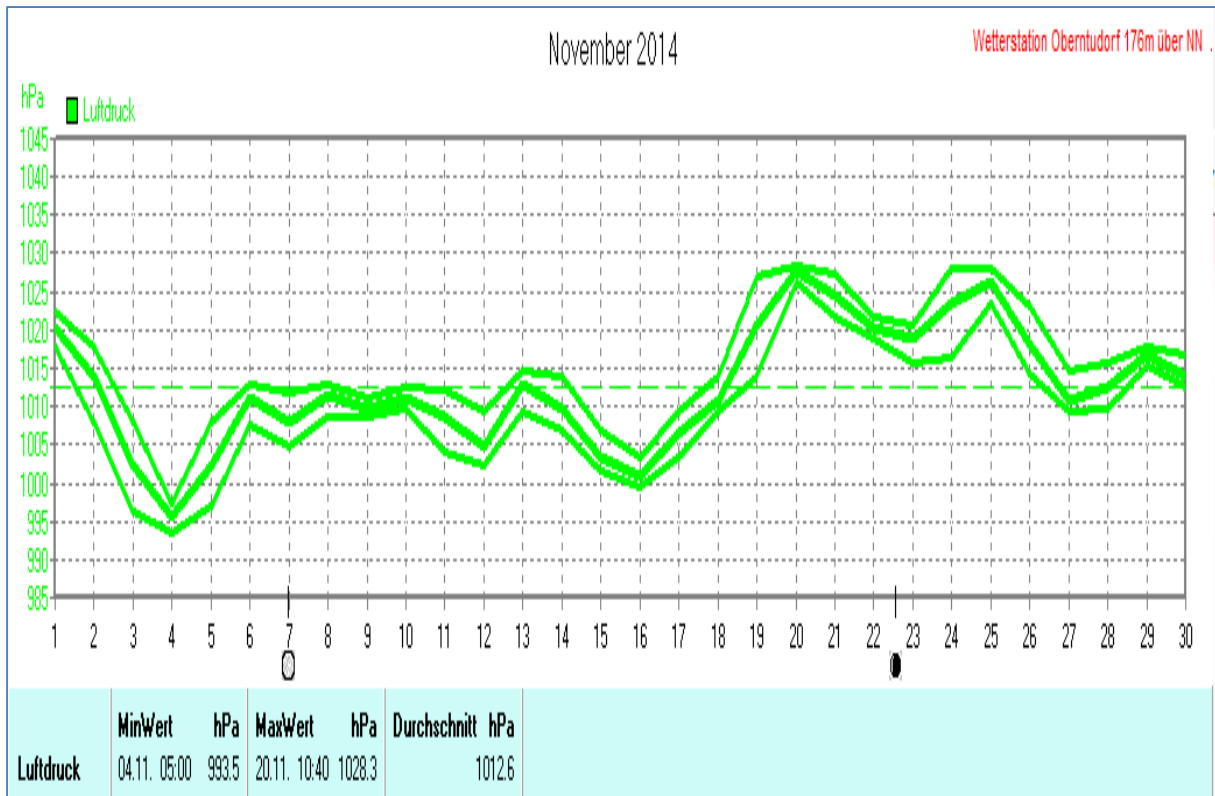


Wettertabelle und Grafiken November 2014 Station Oberntudorf

Wetterdaten November 2014 Station Oberntudorf							
Meßgröße	Minimum	Zeit	Datum	Maximum	Zeit	Datum	Durchschnitt
Lufttemp.	0,7 °C	04:50	25.11.2014	23,8 °C	12:50	01.11.2014	8,0 °C
Bodentemp.	0,6 °C	04:40	25.11.2014	19,4 °C	14:30	01.11.2014	7,6 °C
Luftfeuchte	59 %	13:20	01.11.2014	97 %	06:20	05.11.2014	87 %
Luftdruck	993,5 hPa	05:00	04.11.2014	1028,3 hPa	10:40	20.11.2014	1012,6 hPa
Wind km/h				17,7 km/h	04:40	28.11.2014	2,8 km/h
Wind °				O-SO	04:40	28.11.2014	O-SO
Regen l/m ²				17,4 l/m ²	11:40	16.11.2014	#31,000 l/m ²
Evapotransp.							#16,624 l/m ²
Solar				382 W/m ²	13:10	01.11.2014	34 W/m ²
Sonne h				6:20 h	16:40	01.11.2014	#59:40 h

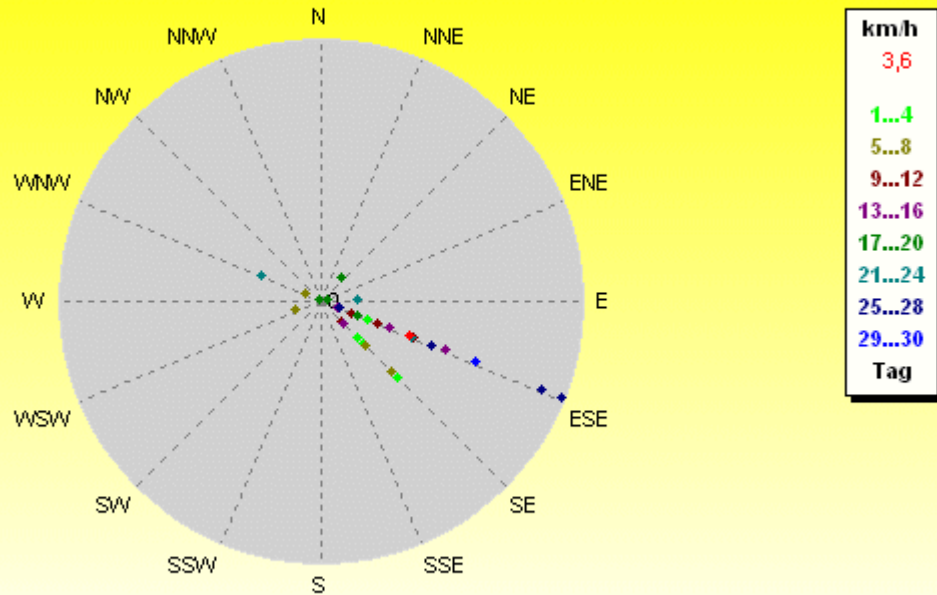






Verteilung Windrichtung/Windgeschwindigkeit November 2014

33154 Salzkotten-Oberntudorf, NRW

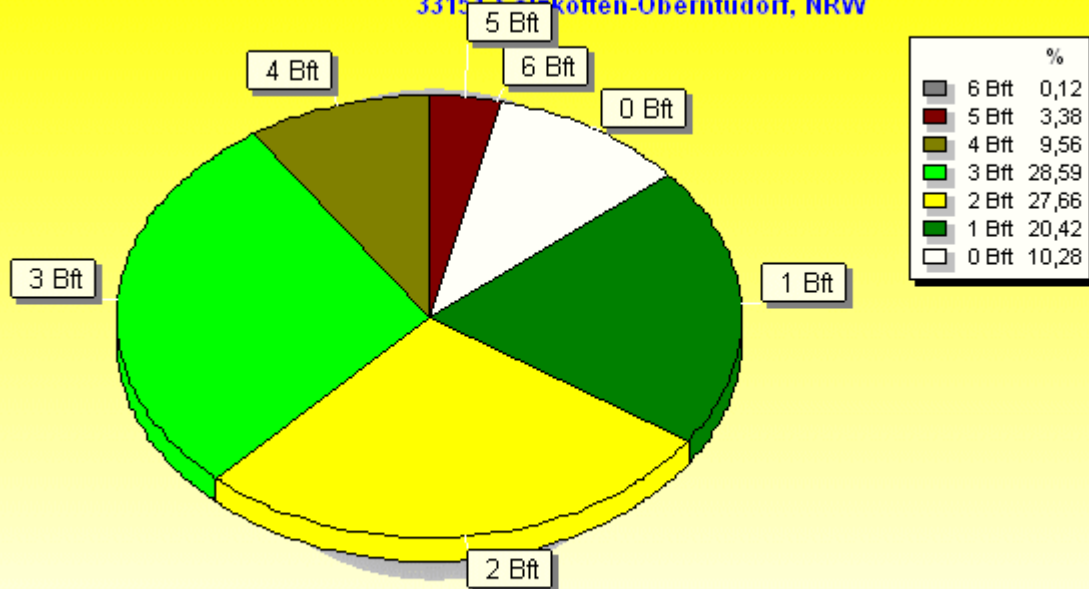


30 Werte - Ø 2,8km/h - Max. 17,7km/h - 7764.9 km

© WzWin32 - Wetterstation Oberntudorf 176m über NN - © 1999-2014 Jürgen Pinger - Davis VantagePro2Plus

Windböen: Verteilung Windstärke November 2014

33154 Salzkotten-Oberntudorf, NRW



4320 Werte - Ø 10,8km/h - Max. 43,5km/h = Windböen - 7764.9 km

© WzWin32 - Wetterstation Oberntudorf 176m über NN - © 1999-2014 Jürgen Pinger - Davis VantagePro2Plus

